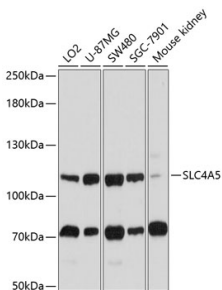


## Anti-SLC4A5 Antibody (A11313)

### Specifications:

|                        |  |
|------------------------|--|
| Name:                  | Anti-SLC4A5 Antibody   |
| Description:           | Rabbit polyclonal antibody to SLC4A5.  |
| Applications:          | WB, IHC  |
| Recommended Dilutions: | WB: 1:500-1:2,000, IHC: 1:50-1:200   |
| Reactivity:            | Human, Mouse, Rat  |
| Immunogen:             | Recombinant fusion protein containing a sequence corresponding to amino acids 1042-1121 of human SLC4A5 (NP_597812.1). |
| Sequence:              | DFIFSQHDLAWIDNILPEKEKKETDKKRKRKKGAAHEDCDEEPQFPPPSVIKIPMESVQSDPQNGIHCIAKRSSSSWSYSL                                      |
| Host:                  | Rabbit   |
| Clonality:             | Polyclonal   |
| Isotype:               | IgG  |
| Conjugate:             | Unconjugated   |
| Purification:          | Affinity purification.   |
| Molecular Weight:      | 110 kDa  |
| Product Form:          | Liquid   |
| Formulation:           | Supplied in Phosphate Buffered Saline, pH 7.3, with 50% Glycerol and 0.02% Sodium Azide.                               |
| Storage:               | Shipped at 4°C. Upon delivery aliquot and store at -20°C. Avoid freeze / thaw cycles.                                  |
| Disclaimer:            | This product is for research use only. It is not intended for diagnostic or therapeutic use.                           |

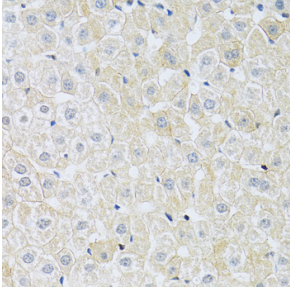
### Images:



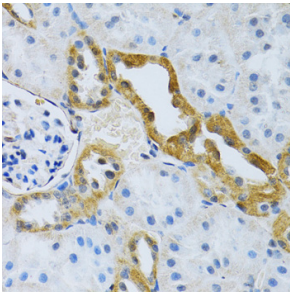
Western blot analysis of extracts of various cell lines, using Anti-SLC4A5 Antibody (A11313) at 1:1,000 dilution. The secondary antibody was Goat Anti-Rabbit IgG H&L Antibody (HRP) at 1:10,000 dilution. Lysates/proteins were present at 25µg per lane. The blocking buffer used was 3% non-fat dry milk in TBST. Detection was with a ECL Basic Kit. Exposure time: 15s.

## Anti-SLC4A5 Antibody (A11313)

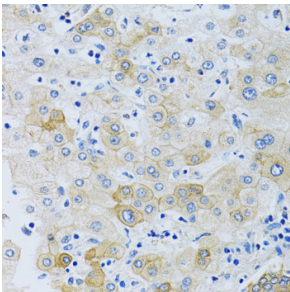
Images continued:



Immunohistochemistry analysis of paraffin-embedded rat liver using Anti-SLC4A5 Antibody (A11313) at a dilution of 1:100 (40x lens). Perform microwave antigen retrieval with 10 mM PBS buffer pH 7.2 before commencing with IHC staining protocol.



Immunohistochemistry analysis of paraffin-embedded rat kidney using Anti-SLC4A5 Antibody (A11313) at a dilution of 1:100 (40x lens). Perform microwave antigen retrieval with 10 mM PBS buffer pH 7.2 before commencing with IHC staining protocol.



Immunohistochemistry analysis of paraffin-embedded human liver using Anti-SLC4A5 Antibody (A11313) at a dilution of 1:100 (40x lens). Perform microwave antigen retrieval with 10 mM PBS buffer pH 7.2 before commencing with IHC staining protocol.