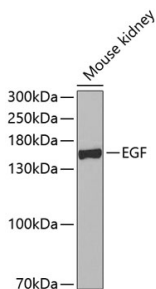


## Anti-EGF Antibody (A11553)

### Specifications:

|                        |  |
|------------------------|--|
| Name:                  | Anti-EGF Antibody  |
| Description:           | Rabbit polyclonal antibody to EGF.   |
| Applications:          | WB, Dot Blot   |
| Recommended Dilutions: | DB: 1:500-1:2,000, WB: 1:500-1:2,000   |
| Reactivity:            | Human, Mouse   |
| Immunogen:             | Recombinant fusion protein containing a sequence corresponding to amino acids 971-1023 of human EGF (NP_001954.2). |
| Sequence:              | NSDSECP LSHDGYCLHDGVCMYIEALDKYACNCVVG YIGERCQYRDLKWWELR  |
| Host:                  | Rabbit   |
| Clonality:             | Polyclonal   |
| Isotype:               | IgG  |
| Conjugate:             | Unconjugated   |
| Purification:          | Affinity purification.   |
| Molecular Weight:      | 160 kDa  |
| Product Form:          | Liquid   |
| Formulation:           | Supplied in Phosphate Buffered Saline, pH 7.3, with 50% Glycerol and 0.02% Sodium Azide.                           |
| Storage:               | Shipped at 4°C. Upon delivery aliquot and store at -20°C. Avoid freeze / thaw cycles.                              |
| Disclaimer:            | This product is for research use only. It is not intended for diagnostic or therapeutic use.                       |

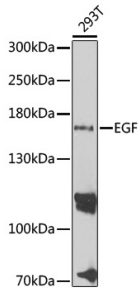
### Images:



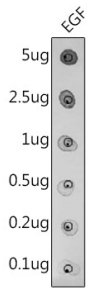
Western blot analysis of extracts of mouse kidney, using Anti-EGF Antibody (A11553) at 1:500 dilution. The secondary antibody was Goat Anti-Rabbit IgG H&L Antibody (HRP) at 1:10,000 dilution. Lysates/proteins were present at 25µg per lane. The blocking buffer used was 3% non-fat dry milk in TBST. Detection was with a ECL Basic Kit. Exposure time: 90s.

## Anti-EGF Antibody (A11553)

Images continued:



Western blot analysis of extracts of 293T cells, using Anti-EGF Antibody (A11553) at 1:1,000 dilution. The secondary antibody was Goat Anti-Rabbit IgG H&L Antibody (HRP) at 1:10,000 dilution. Lysates/proteins were present at 25 $\mu$ g per lane. The blocking buffer used was 3% non-fat dry milk in TBST. Detection was with a ECL Basic Kit. Exposure time: 10s.



Dot blot analysis of purified mature EGF using Anti-EGF Antibody (A11553) at a 1:500 dilution.