

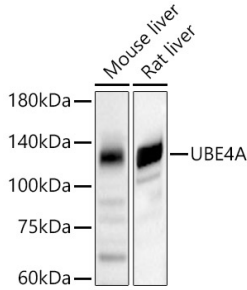
Anti-Ube4a Antibody (A11638)

Specifications:

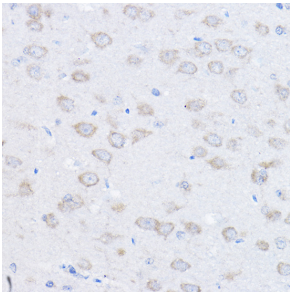
Name:	Anti-Ube4a Antibody
Description:	Rabbit polyclonal antibody to Ube4a.
Applications:	WB, IHC
Recommended Dilutions:	WB: 1:1,000-1:5,000, IHC: 1:50-1:200
Reactivity:	Human, Mouse, Rat
Immunogen:	Recombinant fusion protein containing a sequence corresponding to amino acids 797-1066 of human UBE4A (NP_001191006.1).
Sequence:	FLLDEAIQYLSKIKIQQIEKDRGEWDSLTPPEARREKEAGLQMFGQLARFHNIMSNETI GTLAFLTSEIKSLFVHPFLAERIISMLNYFLQHLVGPKMGALKVKDFSEFDKPKQLV SDICTIYLNLGDEENFCATVPKDGRSYSPTLFAQTVRVLKKINKPGNMIMAFSNLAER IKSLADLQQQEEETYADACDEFDLPIMSTLMCDPVVLPSSRVTVDRSTIARHLLSDQT DPFNRSPLTMDQIRPNTELKEKIQRWLAERKQQKEQLE
Host:	Rabbit
Clonality:	Polyclonal
Isotype:	IgG
Conjugate:	Unconjugated
Purification:	Affinity purification.
Molecular Weight:	123 kDa
Product Form:	Liquid
Formulation:	Supplied in Phosphate Buffered Saline, pH 7.3, with 50% Glycerol and 0.02% Sodium Azide.
Storage:	Shipped at 4°C. Upon delivery aliquot and store at -20°C. Avoid freeze / thaw cycles.
Disclaimer:	This product is for research use only. It is not intended for diagnostic or therapeutic use.

Anti-Ube4a Antibody (A11638)

Images:



Western blot analysis of various lysates, using Anti-Ube4a Antibody (A11638) at 1:3,000 dilution. The secondary antibody was Goat Anti-Rabbit IgG H&L Antibody (HRP) at 1:10,000 dilution. Lysates/proteins were present at 25 μ g per lane. The blocking buffer used was 3% non-fat dry milk in TBST. Detection was with a ECL Basic Kit. Exposure time: 60s.



Immunohistochemistry analysis of paraffin-embedded rat brain using Anti-Ube4a Antibody (A11638) at a dilution of 1:100 (40x lens). Perform high pressure antigen retrieval with 10 mM citrate buffer pH 6.0 before commencing with IHC staining protocol.