

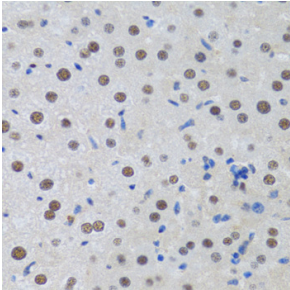
Anti-MTA3 Antibody (A12001)

Specifications:

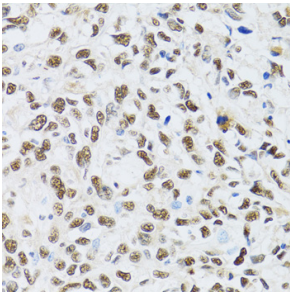
Name:	Anti-MTA3 Antibody
Description:	Rabbit polyclonal antibody to MTA3.
Applications:	WB, IHC
Recommended Dilutions:	WB: 1:500-1:2,000, IHC: 1:50-1:200
Reactivity:	Human, Mouse, Rat
Immunogen:	Recombinant fusion protein containing a sequence corresponding to amino acids 40-330 of human MTA3 (NP_065795.1).
Sequence:	AKVVCFYRRRDISNTLIMLADKHAKEIEEESETTVEADLTDKQKHQLKHRELFLSRQY ESLPATHIRGKCSVALLNETESVLSYLDKEDTFFYSLVYDPSLKTLLADKGEIRVGPR YQADIPPEMLLEGESDEREQSKLEVKVVDPNSPLTDRQIDQFLVVARAVGTFARALDCS SSVRQPSLHMSAAAASRDITLFHAMDTLYRHSYDLSSAISVLVPLGGPVLCRDEMEEW SASEASLFEEALEKYGKDFNDIRQDFLPWKSLTSIIIEYYMWKTTDRYVQQKRLKAAE A
Host:	Rabbit
Clonality:	Polyclonal
Isotype:	IgG
Conjugate:	Unconjugated
Purification:	Affinity purification.
Molecular Weight:	65 kDa
Product Form:	Liquid
Formulation:	Supplied in Phosphate Buffered Saline, pH 7.3, with 50% Glycerol and 0.02% Sodium Azide.
Storage:	Shipped at 4°C. Upon delivery aliquot and store at -20°C. Avoid freeze / thaw cycles.
Disclaimer:	This product is for research use only. It is not intended for diagnostic or therapeutic use.

Anti-MTA3 Antibody (A12001)

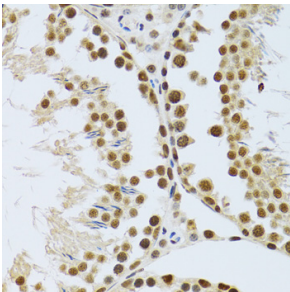
Images:



Immunohistochemistry analysis of paraffin-embedded rat liver using Anti-MTA3 Antibody (A12001) at a dilution of 1:100 (40x lens). Perform microwave antigen retrieval with 10 mM PBS buffer pH 7.2 before commencing with IHC staining protocol.



Immunohistochemistry analysis of paraffin-embedded human liver cancer using Anti-MTA3 Antibody (A12001) at a dilution of 1:100 (40x lens). Perform microwave antigen retrieval with 10 mM PBS buffer pH 7.2 before commencing with IHC staining protocol.



Immunohistochemistry analysis of paraffin-embedded mouse testis using Anti-MTA3 Antibody (A12001) at a dilution of 1:100 (40x lens). Perform microwave antigen retrieval with 10 mM PBS buffer pH 7.2 before commencing with IHC staining protocol.