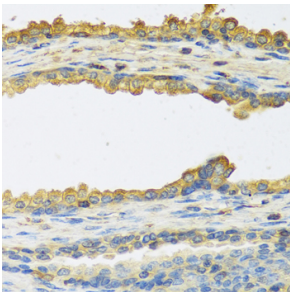


## Anti-TSH beta Antibody (A12019)

### Specifications:

Name:	Anti-TSH beta Antibody
Description:	Rabbit polyclonal antibody to TSH beta.
Applications:	WB, IHC, ICC/IF
Recommended Dilutions:	WB: 1:500-1:2,000, IHC: 1:50-1:100, ICC/IF: 1:50-1:100
Reactivity:	Human, Mouse
Immunogen:	Recombinant fusion protein containing a sequence corresponding to amino acids 21-138 of human TSHB (NP_000540.2).
Sequence:	FCIPTEYTMHIERRECA YCLTINTTICAGYCMTRDINGKLF LPKYALSQDVCTYRDFI YRTVEIPGCPLHVAPYFSYPVALSCKCGKCNTDYSDCIHEAIKTN YCTKPQKSYLVGF SV
Host:	Rabbit
Clonality:	Polyclonal
Isotype:	IgG
Conjugate:	Unconjugated
Purification:	Affinity purification.
Product Form:	Liquid
Formulation:	Supplied in Phosphate Buffered Saline, pH 7.3, with 50% Glycerol and 0.02% Sodium Azide.
Storage:	Shipped at 4°C. Upon delivery aliquot and store at -20°C. Avoid freeze / thaw cycles.
Disclaimer:	This product is for research use only. It is not intended for diagnostic or therapeutic use.

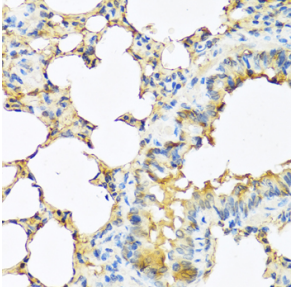
### Images:



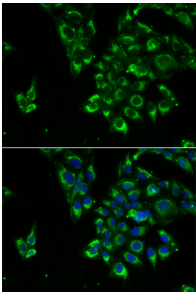
Immunohistochemistry analysis of paraffin-embedded human prostate using Anti-TSH beta Antibody (A12019) at a dilution of 1:100 (40x lens). Perform microwave antigen retrieval with 10 mM PBS buffer pH 7.2 before commencing with IHC staining protocol.

## Anti-TSH beta Antibody (A12019)

Images continued:



Immunohistochemistry analysis of paraffin-embedded mouse lung using Anti-TSH beta Antibody (A12019) at a dilution of 1:100 (40x lens). Perform microwave antigen retrieval with 10 mM PBS buffer pH 7.2 before commencing with IHC staining protocol.



Immunofluorescence analysis of U2OS cells using Anti-TSH beta Antibody (A12019). DAPI was used to stain the cell nuclei (blue).