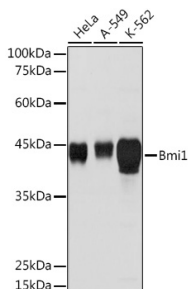


Anti-Bmi1 Antibody (A12543)

Specifications:

Name:	Anti-Bmi1 Antibody
Description:	Rabbit polyclonal antibody to Bmi1.
Applications:	WB, IP
Recommended Dilutions:	WB: 1:500-1:2,000, IP: 1:50-1:100
Reactivity:	Human, Mouse, Rat
Immunogen:	A synthetic peptide corresponding to a sequence within amino acids 200-300 of human Bmi1 (NP_005171.4).
Sequence:	LKDYYTLMEDIAIYITWRRNGPLPLKYRVRPTCKRMKISHQRDGLTNAGELESDSGSDK ANSPAGGIPSTSSCLPSPSTPVQSPHPQFPHISSTMNGTSNSP
Host:	Rabbit
Clonality:	Polyclonal
Isotype:	IgG
Conjugate:	Unconjugated
Purification:	Affinity purification.
Molecular Weight:	43 kDa
Product Form:	Liquid
Formulation:	Supplied in Phosphate Buffered Saline, pH 7.3, with 50% Glycerol and 0.01% Thiomersal.
Storage:	Shipped at 4°C. Upon delivery aliquot and store at -20°C. Avoid freeze / thaw cycles.
Disclaimer:	This product is for research use only. It is not intended for diagnostic or therapeutic use.

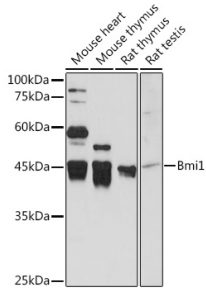
Images:



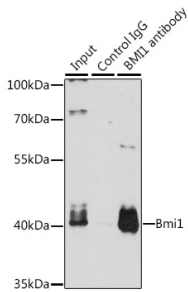
Western blot analysis of extracts of various cell lines, using Anti-Bmi1 Antibody (A12543) at 1:5,000 dilution. The secondary antibody was Goat Anti-Rabbit IgG H&L Antibody (HRP) at 1:10,000 dilution. Lysates/proteins were present at 25µg per lane. The blocking buffer used was 3% non-fat dry milk in TBST. Detection was with a ECL Basic Kit. Exposure time: 10s.

Anti-Bmi1 Antibody (A12543)

Images continued:



Western blot analysis of extracts of various cell lines, using Anti-Bmi1 Antibody (A12543) at 1:5,000 dilution. The secondary antibody was Goat Anti-Rabbit IgG H&L Antibody (HRP) at 1:10,000 dilution. Lysates/proteins were present at 25 μ g per lane. The blocking buffer used was 3% non-fat dry milk in TBST. Detection was with a ECL Basic Kit. Exposure time: 90s.



Immunoprecipitation analysis of 200 μ g extracts of K-562 cells using 3 μ g of Anti-Bmi1 Antibody (A12543). This Western blot was performed on the immunoprecipitate using Anti-Bmi1 Antibody (A12543) at a dilution of 1:1000.