

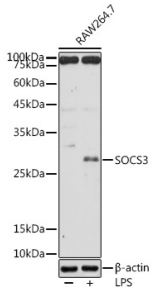
Anti-SOCS3 Antibody (A12687)

Specifications:

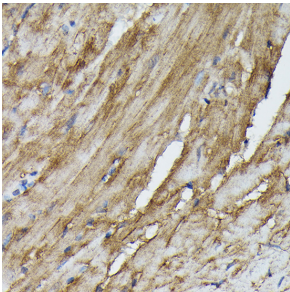
Name:	Anti-SOCS3 Antibody
Description:	Rabbit polyclonal antibody to SOCS3.
Applications:	WB, IHC, ICC/IF
Recommended Dilutions:	WB: 1:100-1:500, IHC: 1:50-1:200, ICC/IF: 1:50-1:200
Reactivity:	Human, Mouse, Rat
Immunogen:	A synthetic peptide corresponding to a sequence within amino acids 100 to the C-terminus of human SOCS3 (NP_003946.3).
Sequence:	GSFSLQSDPRSTQPVPRFDCVLKLVHHYMPPPGAPSFPSPTPEPSSEVPEQPSAQPLP GSPRRRAYIYSGGEKIPLVLSRPLSSNVATLQHLCRKTVNGHLDSEYKVTQLPGPIR EFLDQYDAPL
Host:	Rabbit
Clonality:	Polyclonal
Isotype:	IgG
Conjugate:	Unconjugated
Purification:	Affinity purification.
Molecular Weight:	30 kDa
Product Form:	Liquid
Formulation:	Supplied in Phosphate Buffered Saline, pH 7.3, with 50% Glycerol and 0.01% Thiomersal.
Storage:	Shipped at 4°C. Upon delivery aliquot and store at -20°C. Avoid freeze / thaw cycles.
Disclaimer:	This product is for research use only. It is not intended for diagnostic or therapeutic use.

Anti-SOCS3 Antibody (A12687)

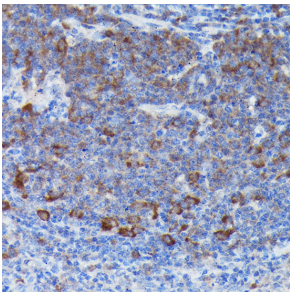
Images:



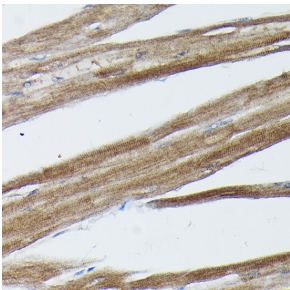
Western blot analysis of extracts of RAW264.7 cells, using Anti-SOCS3 Antibody (A12687) at 1:500 dilution. Raw264.7 cells were treated by LPS (1 μ g/ml) at 37°C for 8 hours. The secondary antibody was Goat Anti-Rabbit IgG H&L Antibody (HRP) at 1:10,000 dilution. Lysates/proteins were present at 25 μ g per lane. The blocking buffer used was 3% non-fat dry milk in TBST. Detection was with a ECL Basic Kit. Exposure time: 180s.



Immunohistochemistry analysis of paraffin-embedded mouse heart using Anti-SOCS3 Antibody (A12687) at a dilution of 1:50 (40x lens). Perform high pressure antigen retrieval with 10 mM citrate buffer pH 6.0 before commencing with IHC staining protocol.



Immunohistochemistry analysis of paraffin-embedded mouse spleen using Anti-SOCS3 Antibody (A12687) at a dilution of 1:50 (40x lens). Perform high pressure antigen retrieval with 10 mM citrate buffer pH 6.0 before commencing with IHC staining protocol.



Immunohistochemistry analysis of paraffin-embedded rat heart using Anti-SOCS3 Antibody (A12687) at a dilution of 1:50 (40x lens). Perform high pressure antigen retrieval with 10 mM citrate buffer pH 6.0 before commencing with IHC staining protocol.