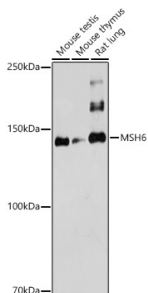


## Anti-MSH6 Antibody (A12741)

### Specifications:

Name:	Anti-MSH6 Antibody
Description:	Rabbit polyclonal antibody to MSH6.
Applications:	WB, IHC, ICC/IF
Recommended Dilutions:	WB: 1:500-1:1,000, IHC: 1:50-1:200, ICC/IF: 1:20-1:100
Reactivity:	Human, Mouse, Rat, Monkey
Immunogen:	A synthetic peptide corresponding to a sequence within amino acids 1-100 of human MSH6 (NP_000170.1).
Sequence:	MSRQSTLYSFFPKSPALSDANKASARASREGGRAAAAAPGASPSPPGGDAAWSEAGPGPR PLARSASPPKAKNLNGGLRRSVAPAAPTSCDFSPGDLVWAKM
Host:	Rabbit
Clonality:	Polyclonal
Isotype:	IgG
Conjugate:	Unconjugated
Purification:	Affinity purification.
Molecular Weight:	150 kDa
Product Form:	Liquid
Formulation:	Supplied in Phosphate Buffered Saline, pH 7.3, with 50% Glycerol and 0.01% Thiomersal.
Storage:	Shipped at 4°C. Upon delivery aliquot and store at -20°C. Avoid freeze / thaw cycles.
Disclaimer:	This product is for research use only. It is not intended for diagnostic or therapeutic use.

### Images:



Western blot analysis of extracts of various cell lines, using Anti-MSH6 Antibody (A12741) at 1:1,000 dilution. The secondary antibody was Goat Anti-Rabbit IgG H&L Antibody (HRP) at 1:10,000 dilution. Lysates/proteins were present at 25µg per lane. The blocking buffer used was 3% non-fat dry milk in TBST. Detection was with a ECL Basic Kit. Exposure time: 180s.