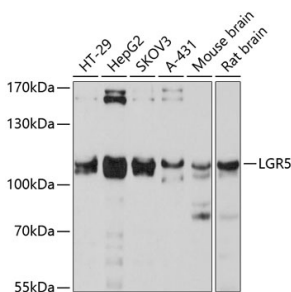


Anti-LGR5 Antibody (A12988)

Specifications:

Name:	Anti-LGR5 Antibody
Description:	Rabbit polyclonal antibody to LGR5.
Applications:	WB, IF
Recommended Dilutions:	WB: 1:1000-1:2000, IF: 1:50-1:200
Reactivity:	Human, Mouse, Rat
Immunogen:	Recombinant fusion protein containing a sequence corresponding to amino acids 824-907 of human LGR5 (NP_003658.1).
Sequence:	NPHFKEDLVSLRKQTYVWTRSKHPSLMSINSDDVEKQSCDSTQALVTFTSSSITYDLP PSSVPSPAYPVTESCHLSSVAFVPCL
Host:	Rabbit
Clonality:	Polyclonal
Isotype:	IgG
Conjugate:	Unconjugated
Purification:	Affinity purification.
Molecular Weight:	105kDa
Formulation:	Supplied in Phosphate Buffered Saline, pH 7.30, with 0.02% Sodium Azide and 50% Glycerol.
Storage:	Shipped at 4°C. Upon delivery aliquot and store at -20°C. Avoid freeze / thaw cycles.
Disclaimer:	This product is for research use only. It is not intended for diagnostic or therapeutic use.

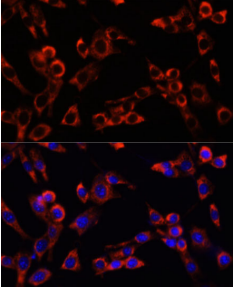
Images:



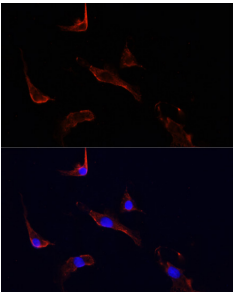
Western blot analysis of extracts of various cell lines, using Anti-LGR5 Antibody (A10545) at 1:3000 dilution.
Secondary antibody: Goat Anti-Rabbit IgG (H+L) (HRP) (AS014) at 1:10,000 dilution.
Lysates / proteins: 25µg per lane.
Blocking buffer: 3% non-fat dry milk in TBST.
Detection: ECL Basic Kit (RM00020).
Exposure time: 10s.

Anti-LGR5 Antibody (A12988)

Images continued:



Immunofluorescence analysis of NIH/3T3 cells using Anti-LGR5 Antibody (A10545) at dilution of 1:100. Blue: DAPI for nuclear staining.



Immunofluorescence analysis of PC12 cells using Anti-LGR5 Antibody (A10545) at dilution of 1:100.