

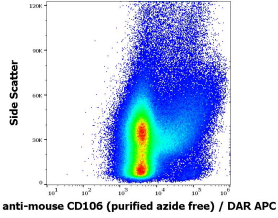
## Anti-CD106 Antibody [429 (MVCAM.A)] - BSA and Azide free (A121765)

### Specifications:

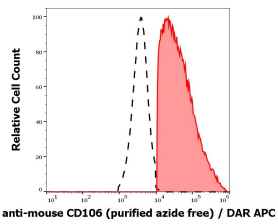
Name:	Anti-CD106 Antibody [429 (MVCAM.A)] - BSA and Azide free
Description:	Rat monoclonal [429 (MVCAM.A)] antibody to CD106.
Specificity:	This antibody, also known as clone MVCAM.A, recognizes an extracellular epitope of murine CD106, a 100-110 kDa type I membrane protein of the immunoglobulin superfamily, a crucial mediator of leukocyte adhesion, and a co-stimulation molecule.
Applications:	Flow Cytometry, IP, IHC-Fr, Functional Studies
Recommended Dilutions:	Flow Cytometry: 1-4 µg/ml
Reactivity:	Mouse
Immunogen:	Murine preadipose cell line PA6.
Host:	Rat
Clonality:	Monoclonal
Clone ID:	429 (MVCAM.A)
Isotype:	IgG2a
Light Chains:	kappa
Conjugate:	Unconjugated
Purification:	Protein A chromatography.
Concentration:	1 mg/ml
Product Form:	Liquid
Formulation:	Supplied in Phosphate Buffered Saline; without Sodium Azide (0.2 µm filter sterilized).
Storage:	Shipped at 4°C. Upon delivery aliquot and store at -20°C. Avoid freeze / thaw cycles.
Disclaimer:	This product is for research use only. It is not intended for diagnostic or therapeutic use.

# Anti-CD106 Antibody [429 (MVCAM.A)] - BSA and Azide free (A121765)

Images:



Flow cytometric analysis of murine bone marrow cell suspension with Anti-CD106 Antibody [429 (MVCAM.A)] (concentration in sample is 0.19 µg/ml), DAR-APC.



Separation of murine CD106 positive cells (red-filled) from CD106 negative cells (black-dashed) in flow cytometry analysis of murine bone marrow cell suspension using Anti-CD106 Antibody [429 (MVCAM.A)] (concentration in sample is 0.19 µg/ml), DAR-APC.