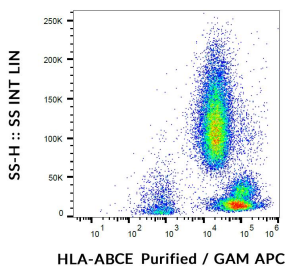


Anti-HLA ABCE Antibody [TP25.99SF] (A121800)

Specifications:

| | |
|------------------------|--|
| Name: | Anti-HLA ABCE Antibody [TP25.99SF] |
| Description: | Mouse monoclonal [TP25.99SF] antibody to HLA ABCE. |
| Specificity: | This antibody recognizes an extracellular epitope on HLA ABC and HLA E molecules, but not HLA G. It can be used for discrimination between HLA G and other HLA Class I antigens. |
| Applications: | Flow Cytometry, WB, IHC-Fr |
| Recommended Dilutions: | Flow Cytometry: 1-4 µg/ml |
| Reactivity: | Human |
| Immunogen: | Interferon gamma treated human melanoma cell line Colo 38. |
| Host: | Mouse |
| Clonality: | Monoclonal |
| Clone ID: | TP25.99SF |
| Isotype: | IgG1 |
| Conjugate: | Unconjugated |
| Purification: | Protein A chromatography. |
| Concentration: | 1 mg/ml |
| Product Form: | Liquid |
| Formulation: | Supplied in Phosphate Buffered Saline with 15 mM Sodium Azide. |
| Storage: | Shipped at 4°C. Upon delivery aliquot and store at -20°C. Avoid freeze / thaw cycles. |
| Disclaimer: | This product is for research use only. It is not intended for diagnostic or therapeutic use. |

Images:



Flow cytometric analysis of human peripheral blood cells with Anti-HLA ABCE Antibody [TP25.99SF], GAM-APC.