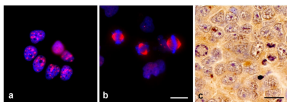


## Anti-TPX2 Antibody [TPX2-01] (A121811)

### Specifications:

Name:	Anti-TPX2 Antibody [TPX2-01]
Description:	Mouse monoclonal [TPX2-01] antibody to TPX2.
Specificity:	This antibody recognizes the epitope EPFVPKKEKKS, amino acids 636-646 in human, of TPX2, a microtubule-associated intracellular critical regulator of mitosis, which is overexpressed in many types of tumors and is a marker of worse prognosis in various cancers.
Applications:	IP, WB, IHC-P, ICC, ELISA
Reactivity:	Rat, Mouse, Human
Immunogen:	Human TPX2.
Host:	Mouse
Clonality:	Monoclonal
Clone ID:	TPX2-01
Isotype:	IgG1
Conjugate:	Unconjugated
Purification:	Protein A chromatography.
Concentration:	1 mg/ml
Product Form:	Liquid
Formulation:	Supplied in Phosphate Buffered Saline with 15 mM Sodium Azide.
Storage:	Shipped at 4°C. Upon delivery aliquot and store at -20°C. Avoid freeze / thaw cycles.
Disclaimer:	This product is for research use only. It is not intended for diagnostic or therapeutic use.

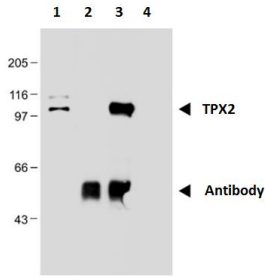
### Images:



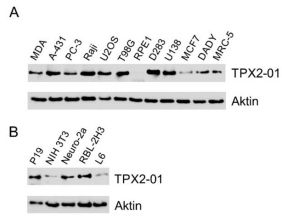
Immunocytochemistry of TPX2 using Anti-TPX2 Antibody [TPX2-01] in glioblastoma cell line T98G: interphase (a) and mitosis (b). Immunohistochemistry of TPX2 in U87MG human glioblastoma cells (orthotopic xenograft in murine brain) using Anti-TPX2 Antibody [TPX2-01] (Bar: 20 $\mu$ m).

# Anti-TPX2 Antibody [TPX2-01] (A121811)

Images continued:



Immunoprecipitation of TPX2 from nuclear extract of HEK293 cells using Anti-TPX2 Antibody [TPX2-01]: nuclear extract (1), antibody (2), immunoprecipitate (3), and carrier (4).



Western blotting analysis of TPX2 in human cell lines (A), murine cell lines (P19, NIH 3T3, Neuro-2a) (B), and rat cell lines (RBL-2H3, L6) (B), using Anti-TPX2 Antibody [TPX2-01].