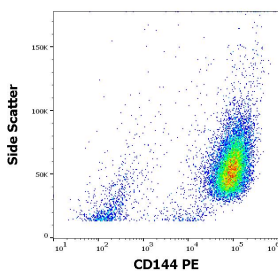


## Anti-CD144 Antibody [55-7H1] (PE) (A121858)

### Specifications:

Name:	Anti-CD144 Antibody [55-7H1] (PE)
Description:	Mouse monoclonal [55-7H1] antibody to CD144 (PE).
Specificity:	This antibody recognizes a calcium-independent extracellular epitope on CD144, an adhesion molecule expressed on endothelial cells.
Applications:	Flow Cytometry
Recommended Dilutions:	Flow Cytometry: This reagent is designed for analysis of human blood cells using 10 µl reagent / 100 µl of whole blood or 10 <sup>6</sup> cells in a suspension.
Reactivity:	Human
Immunogen:	Human endothelial cells.
Host:	Mouse
Clonality:	Monoclonal
Clone ID:	55-7H1
Isotype:	IgG1
Light Chains:	kappa
Conjugate:	PE
Purification:	This antibody is conjugated with PE under optimum conditions. The conjugate is purified by size-exclusion chromatography.
Product Form:	Liquid
Formulation:	Supplied in Phosphate Buffered Saline with 15 mM Sodium Azide.
Storage:	Store in the dark at 2-8°C. Do not freeze!
Disclaimer:	This product is for research use only. It is not intended for diagnostic or therapeutic use.

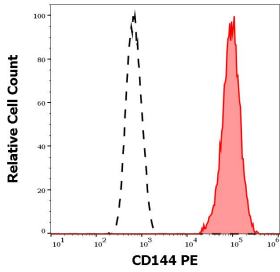
### Images:



Flow cytometric analysis of HUVEC cells stained with Anti-CD144 Antibody [55-7H1] (PE) (10 µl reagent per million cells in 100 µl of cell suspension).

## Anti-CD144 Antibody [55-7H1] (PE) (A121858)

Images continued:



Separation of HUVEC cells (red-filled) from HL-60 cells (black-dashed) in flow cytometry analysis using Anti-CD144 Antibody [55-7H1] (PE) (10 $\mu$ l reagent per milion cells in 100 $\mu$ l of cell suspension).