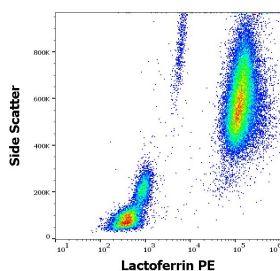


Anti-Lactoferrin Antibody [LF5-1D2] (PE) (A121877)

Specifications:

| | |
|------------------------|--|
| Name: | Anti-Lactoferrin Antibody [LF5-1D2] (PE) |
| Description: | Mouse monoclonal [LF5-1D2] antibody to Lactoferrin (PE). |
| Specificity: | This antibody recognizes Lactoferrin, an iron-binding secreted glycoprotein of about 90 kDa, which has anti-inflammatory, immunomodulatory, and anti-microbial properties. |
| Applications: | Flow Cytometry |
| Recommended Dilutions: | Flow Cytometry: This reagent is designed for analysis of human blood cells using 10 μ l reagent / 100 μ l of whole blood or 10^6 cells in a suspension. |
| Reactivity: | Human |
| Immunogen: | Human Lactoferrin. |
| Host: | Mouse |
| Clonality: | Monoclonal |
| Clone ID: | LF5-1D2 |
| Isotype: | IgG1 |
| Conjugate: | PE |
| Purification: | This antibody is conjugated with PE under optimum conditions. The conjugate is purified by size-exclusion chromatography. |
| Product Form: | Liquid |
| Formulation: | Supplied in Phosphate Buffered Saline with 15 mM Sodium Azide. |
| Storage: | Store in the dark at 2-8°C. Do not freeze! |
| Disclaimer: | This product is for research use only. It is not intended for diagnostic or therapeutic use. |

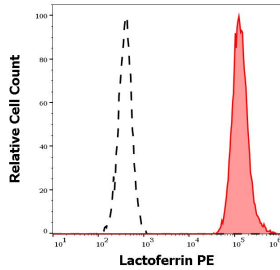
Images:



Flow cytometric analysis of human peripheral whole blood stained using Anti-Lactoferrin Antibody [LF5-1D2] (PE) (10 μ l reagent per 100 μ l of peripheral whole blood).

Anti-Lactoferrin Antibody [LF5-1D2] (PE) (A121877)

Images continued:



Separation of human neutrophil granulocytes (red-filled) from lymphocytes (black-dashed) in flow cytometry analysis of human peripheral whole blood using Anti-Lactoferrin Antibody [LF5-1D2] (PE) (10 μ l reagent per 100 μ l of peripheral whole blood).