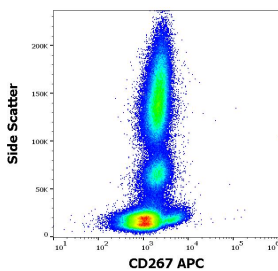


Anti-CD267 Antibody [1A1] (APC) (A121897)

Specifications:

Name:	Anti-CD267 Antibody [1A1] (APC)
Description:	Rat monoclonal [1A1] antibody to CD267 (APC).
Specificity:	This antibody recognizes an extracellular epitope of CD267, a 32 kDa type III transmembrane protein expressed by B cells and possibly by some activated T cells.
Applications:	Flow Cytometry
Recommended Dilutions:	Flow Cytometry: This reagent is designed for analysis of human blood cells using 10 µl reagent / 100 µl of whole blood or 10 ⁶ cells in a suspension.
Reactivity:	Human
Immunogen:	CD267 transfected RBL cells.
Host:	Rat
Clonality:	Monoclonal
Clone ID:	1A1
Isotype:	IgG2a
Conjugate:	APC
Purification:	This antibody is conjugated with APC under optimum conditions. The conjugate is purified by size-exclusion chromatography.
Product Form:	Liquid
Formulation:	Supplied in Phosphate Buffered Saline with 15 mM Sodium Azide.
Storage:	Store in the dark at 2-8°C. Do not freeze!
Disclaimer:	This product is for research use only. It is not intended for diagnostic or therapeutic use.

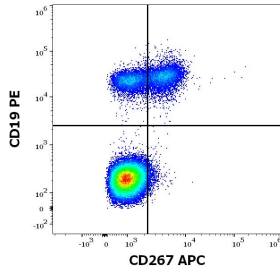
Images:



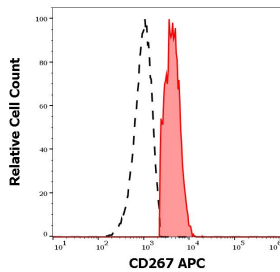
Flow cytometric analysis of human peripheral whole blood stained using Anti-CD267 Antibody [1A1] (APC) (10µl reagent per 100µl of peripheral whole blood).

Anti-CD267 Antibody [1A1] (APC) (A121897)

Images continued:



Flow cytometric analysis of human lymphocytes using Anti-CD267 Antibody [1A1] (APC) (10µl reagent per 100µl of peripheral whole blood) and Anti-CD19 Antibody [LT19] (PE) (20µl reagent per 100µl of peripheral whole blood).



Separation of human CD267 positive CD19 positive lymphocytes (red-filled) from human CD267 negative CD19 negative lymphocytes (black-dashed) in flow cytometry analysis of human peripheral whole blood using Anti-CD267 Antibody [1A1] (APC) (10µl reagent per 100µl of peripheral whole blood).