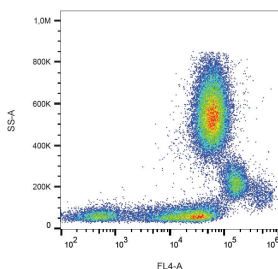


Anti-CD31 Antibody [MEM-05] (PE-Cyanine 5) (A122056)

Specifications:

| | |
|------------------------|--|
| Name: | Anti-CD31 Antibody [MEM-05] (PE-Cyanine 5) |
| Description: | Mouse monoclonal [MEM-05] antibody to CD31 (PE-Cyanine 5). |
| Specificity: | This antibody reacts with an extracellular epitope of CD31, a 130-140 kDa type I transmembrane glycoprotein expressed on monocytes, platelets, granulocytes, endothelial cells, and stem cells of the myeloid lineage. |
| Applications: | Flow Cytometry |
| Recommended Dilutions: | Flow Cytometry: This reagent is designed for analysis of human blood cells using 4 μ l reagent / 100 μ l of whole blood or 10^6 cells in a suspension. |
| Reactivity: | Human |
| Immunogen: | Leukocytes of patient suffering from LGL type leukaemia. |
| Host: | Mouse |
| Clonality: | Monoclonal |
| Clone ID: | MEM-05 |
| Isotype: | IgG1 |
| Conjugate: | PE-Cyanine 5 |
| Purification: | This antibody is conjugated with tandem dye PE-Cyanine 5 under optimum conditions. The conjugate is purified by size-exclusion chromatography. |
| Product Form: | Liquid |
| Formulation: | Supplied in Phosphate Buffered Saline with 15 mM Sodium Azide. |
| Storage: | Store in the dark at 2-8°C. Do not freeze! |
| Disclaimer: | This product is for research use only. It is not intended for diagnostic or therapeutic use. |

Images:



Flow cytometric analysis of human peripheral blood with Anti-CD31 Antibody [MEM-05] (PE-Cyanine 5).