

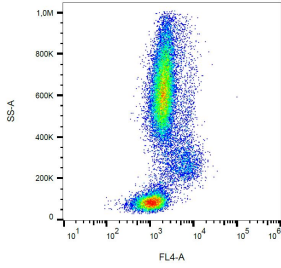
Mouse IgG2b [MPC-11] (PE-Cyanine 5) (A122137)

Specifications:

Name:	Mouse IgG2b [MPC-11] (PE-Cyanine 5)
Description:	Mouse IgG2b [MPC-11] (PE-Cyanine 5) - Isotype Control
Specificity:	This antibody reacts with an unknown epitope. It does not react with a variety of resting, activated, live, and fixed mouse, rat, and human tissues.
Applications:	Flow Cytometry, Isotype Control
Recommended Dilutions:	Isotype Control: Use the same concentration of this isotype control as the working concentration of the primary antibody.
Cross Reactivity:	This antibody does not react with Mouse, Rat, and Human.
Immunogen:	KLH-coupled trinitrophenol.
Host:	Mouse
Clonality:	Monoclonal
Clone ID:	MPC-11
Isotype:	IgG2b
Light Chains:	kappa
Conjugate:	PE-Cyanine 5
Purification:	This antibody is conjugated with tandem dye PE-Cyanine 5 under optimum conditions. The conjugate is purified by size-exclusion chromatography.
Concentration:	0.1 mg/ml
Product Form:	Liquid
Formulation:	Supplied in Phosphate Buffered Saline with 15 mM Sodium Azide.
Storage:	Store in the dark at 2-8°C. Do not freeze!
Disclaimer:	This product is for research use only. It is not intended for diagnostic or therapeutic use.

Mouse IgG2b [MPC-11] (PE-Cyanine 5) (A122137)

Images:



Example of non-specific Mouse IgG2b [MPC-11] (PE-Cyanine 5) signal on human peripheral blood, surface staining, 1µg/ml.