

Recombinant Human PLA2R1 Protein (Functional) (A122161)

Specifications:

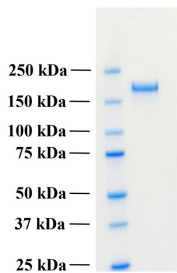
Name:	Recombinant Human PLA2R1 Protein (Functional)
Applications:	WB, SDS-PAGE, Immunoassays, Functional Studies
Expression System:	HEK293 cells.
Protein Species:	Human
Protein Length:	Protein fragment.
Sequence:	AEGVAAALTPERLLEWQDKGIFVIQSESLKKCIQAGKSVLTLENCKQANKHMLWKWVS NHGLFNIGGSGCLGLNFSAPEQPLSLYECDSTLVSLRWRCNRKMITGPLQYSVQVAHD NTVVASRKYIHKWISYGSGGGDICEYLHKDLHTIKGNTHGMPCMFQYNHQWHHECT REGREDDLLWCATTSRYERDEKWFPCDPPTSAEVGCDTIWEKDLNSHICYQFNLLSSL SWSEAHSSCQMGGTLLSITDETEENFIREHMSSKTVEVWVWMLNQLDEHAGWQWSDGT PLNYLNWSPEVNFEPFVEDHCGTFSSFMPSAWRSRDCESTLPYICKKYLNHIDHEIVE KDAWKYYATHCEPGWNPYNRNCYKLQKEEKTWHEALRSCQADNSALIDITSLAEVEFL VTLLGDENASETWIGLSSNKIPVSFEWSNDSSVIFTNWHTLEPHIFPNRSQLCVSAEQ SEGHWKVKNCEERLFYICKKAGHVLSDAESGCQEGWERHGGFCYKIDTVLRSFDQASS GYYCPPALVTITNRFEQAFITSLISSVVKMKDSYFWIALQDQNDTGEYTWKPVGQKPE PVQYTHWNTHQPRYSGGCVAMRGRHPLGRWEVKHCRHFKAMSLCKQPVENQEKAEEYEE RWPFPHPCYLDWESEPLASCFKVFHSEKVLKRTWREAEAFCEEFGAHLASFAHIEEE NFVNELLHSKFNWTEERQFWIGFNKRNLNAGSWEWSDRTPVVSSFLDNTYFGEDARN CAVYKANKTLLPLHCGSKREWICKIPRDVVKPIPFWYQYDVPWLFYQDAEYLFHTFAS EWLNFVCSWLHSDLLTIHSAHEQEFIHISKIKALSKYGASWWIGLQEERANDEFWR DGTPVIYQNWDTGRERTVNNQSQRGFISSITGLWGSEECVSMPSICKRKKVWVWLIK KKDTPKQHGTCPKGWLWYFNKCLLLNIPKDPSSWKNWTHAQHFCAEEGGTLVAIESEV EQAFITMNLFGQTTSVWIGLQNDYETWLNKPVVYSNWSPFDIINIPSHNTTEVQKH IPLCALLSSNPNFHTGKWFYFEDCGKEGYGFVCEKMQDTSGHGVNTSDMYPMPNTLEY GNRTYKIINANMTWYAAIKTCLMHKAQLVSITDQYHQSFLLTVLNLRLGYAHWIGLFTT DNGLNFDWSDGKSSFTFWKDEESSLLGDCVFADSNRWHSTACESFLQGAICHVPPE TRQSEHPCLCSETSIPWIKFKSNCYSFSTVLDSMSFEAAHEFCKKEGSNLLTIKDEAE NAFLLEELFAFGSSVQMVWLNAQFDGNNETIKWFDGTPTDQSNWGIKPDYDFKPHH CVALRIPEGLWQLSPCQEKKGFICKMEADIHTAEALPEKGPSSGSGHHHHHHHHHHH
Amino Acids:	21 to 1397
Tag:	His Tag (10xHis at the C-terminus).
Predicted MW:	160.7 kDa (including tags).
Biologically Active:	Yes
Purity:	> 95% (by SDS-PAGE).
Purification:	Affinity chromatography.
Product Form:	Liquid

Recombinant Human PLA2R1 Protein (Functional) (A122161)

Specifications continued:

Concentration:	Lot specific.
Formulation:	Supplied in Phosphate Buffered Saline with 20% Glycerol.
Endotoxin Level:	< 0.1 ng/μg (1 IEU/μg), as measured by LAL method.
Storage:	Shipped at 4°C. Upon delivery aliquot and store at -20°C or -70°C. Avoid freeze / thaw cycles.
Disclaimer:	This product is for research use only. It is not intended for diagnostic or therapeutic use.

Images:



Recombinant Human PLA2R1 Protein (Functional) on SDS-PAGE under reducing conditions. The gel was stained with Instant Blue Stain. The purity of the protein is greater than 95%. Estimated molecular weight (SDS-PAGE) of 200 kDa.