

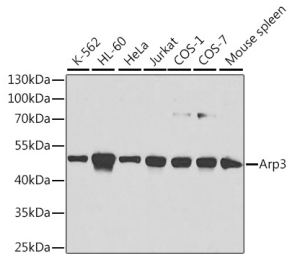
## Anti-Arp3 Antibody (A13020)

### Specifications:

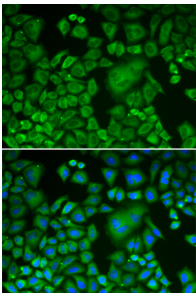
Name:	Anti-Arp3 Antibody
Description:	Rabbit polyclonal antibody to Arp3.
Applications:	WB, ICC/IF
Recommended Dilutions:	WB: 1:500-1:2,000, ICC/IF: 1:10-1:100
Reactivity:	Human, Mouse, Rat, Monkey
Immunogen:	Recombinant fusion protein containing a sequence corresponding to amino acids 1-418 of human Arp3 (NP_005712.1).
Sequence:	MAGRLPACVVDCGTGYTKLGYAGNTEPQFIIPSCIAIKESAKVGDQAQRVMKGVDDL DFFIGDEAIEKPTYATKWPIRHGIVEDWDLMERFMEQVIFKYLRAEPEDHYFLLTEPP LNTPENREYTAEIMFESFNVPGLYIAVQAVLALAASWTSRQVGERTLTGTVIDSGDGV THVIPVAEGYVIGSCIKHIPIAGRDITYFIQQLLRDREVGIPPEQSLETAKAVKERY YVCPDLVKEFNKYD TDGSKWIKQYTGINAISKKEFSIDVGYERFLGPEIFFHPEFANP DFTQPISEVVDEVIQNCPIDVRRPLYKNIVLSGGSTMFRDFGRRLQRDLKRTVDARLK LSEELSGGRLKPKPIDVQVITHHMQRVAVWFGGSMLASTPEFYQVCHTKKDYEEIGPS ICRHNPVFGVMS
Host:	Rabbit
Clonality:	Polyclonal
Isotype:	IgG
Conjugate:	Unconjugated
Purification:	Affinity purification.
Molecular Weight:	47 kDa
Product Form:	Liquid
Formulation:	Supplied in Phosphate Buffered Saline, pH 7.3, with 50% Glycerol and 0.02% Sodium Azide.
Storage:	Shipped at 4°C. Upon delivery aliquot and store at -20°C. Avoid freeze / thaw cycles.
Disclaimer:	This product is for research use only. It is not intended for diagnostic or therapeutic use.

## Anti-Arp3 Antibody (A13020)

### Images:



Western blot analysis of extracts of various cell lines, using Anti-Arp3 Antibody (A13020) at 1:1,000 dilution. The secondary antibody was Goat Anti-Rabbit IgG H&L Antibody (HRP) at 1:10,000 dilution. Lysates/proteins were present at 25 $\mu$ g per lane. The blocking buffer used was 3% non-fat dry milk in TBST. Detection was with a ECL Basic Kit.



Immunofluorescence analysis of HeLa cells using Anti-Arp3 Antibody (A13020). DAPI was used to stain the cell nuclei (blue).