

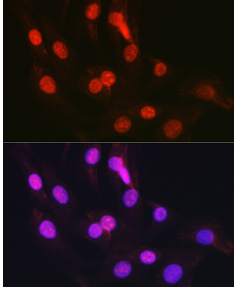
Anti-CTCF Antibody (A13288)

Specifications:

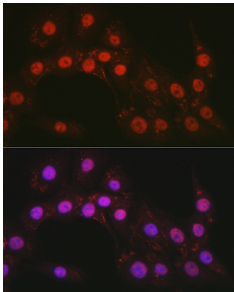
Name:	Anti-CTCF Antibody
Description:	Rabbit polyclonal antibody to CTCF.
Applications:	WB, IHC, ICC/IF, IP, ChIP
Recommended Dilutions:	WB: 1:500-1:2,000, IHC: 1:50-1:200, ICC/IF: 1:50-1:200, IP: 1:100-1:500, ChIP: 1:50-1:200
Reactivity:	Human, Mouse, Rat, Monkey
Immunogen:	Recombinant fusion protein containing a sequence corresponding to amino acids 1-260 of human CTCF (NP_006556.1).
Sequence:	MEGDAVEAIVEESETFIKGERKTYQRRREGGQEEDACHLPQNQTDGGGEVVDVNSSV QMVMMEQLDPTLLQMKTEVMEGTVAPEAEEAVDDTQIITLQVVNMEEQPINIGELQLV QVPVPVTVPVATTSVEELQGAYENEVSKEGLAESEPMICHTLPLPEGFQVVKVGANGE VETLEQGELPPQEDPSWQKDPDYQPPAKKTKKTKKSKLRYTEEGKDVDVSVYDFEEEQ QEGLLSEVNAEKVVGNMKPPKPTKIKKK
Host:	Rabbit
Clonality:	Polyclonal
Isotype:	IgG
Conjugate:	Unconjugated
Purification:	Affinity purification.
Molecular Weight:	140 kDa
Product Form:	Liquid
Formulation:	Supplied in Phosphate Buffered Saline, pH 7.3, with 50% Glycerol and 0.05% Proclin 300.
Storage:	Shipped at 4°C. Upon delivery aliquot and store at -20°C. Avoid freeze / thaw cycles.
Disclaimer:	This product is for research use only. It is not intended for diagnostic or therapeutic use.

Anti-CTCF Antibody (A13288)

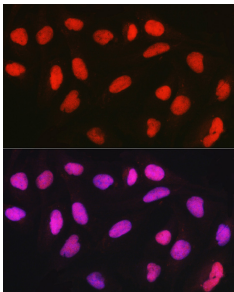
Images:



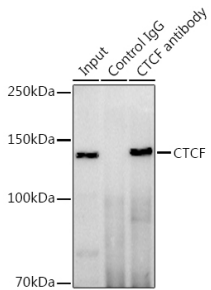
Immunofluorescence analysis of NIH/3T3 cells using Anti-CTCF Antibody (A13288) at a dilution of 1:50 (40x lens). DAPI was used to stain the cell nuclei (blue).



Immunofluorescence analysis of PC-12 cells using Anti-CTCF Antibody (A13288) at a dilution of 1:50 (40x lens). DAPI was used to stain the cell nuclei (blue).



Immunofluorescence analysis of U2OS cells using Anti-CTCF Antibody (A13288) at a dilution of 1:50 (40x lens). DAPI was used to stain the cell nuclei (blue).



Immunoprecipitation analysis of 300 μ g extracts of HeLa cells using 3 μ g of Anti-CTCF Antibody (A13288). This Western blot was performed on the immunoprecipitate using Anti-CTCF Antibody (A13288) at a dilution of 1:500.