

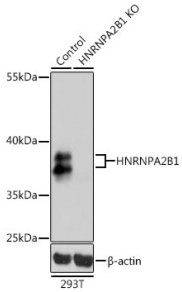
Anti-hnRNP A2B1 Antibody (A13338)

Specifications:

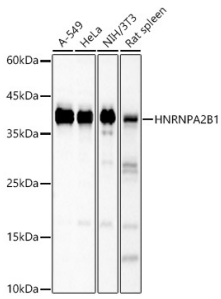
Name:	Anti-hnRNP A2B1 Antibody
Description:	Rabbit polyclonal antibody to hnRNP A2B1.
Applications:	WB, IHC, ICC/IF
Recommended Dilutions:	WB: 1:500-1:2,000, IHC: 1:50-1:200, ICC/IF: 1:50-1:200
Reactivity:	Human, Mouse, Rat
Immunogen:	Recombinant fusion protein containing a sequence corresponding to amino acids 1-180 of human HNRNPA2B1 (NP_002128.1).
Sequence:	MEREKEQFRKLFIGGLSFETTEESLRNYEQWGKLTDCVVMRDPASKRSRGFGFVTFS SMAEVDAAAMAARPHSIDGRVVEPKRAVAREESGKPGAHVTVKKLFVGGIKEDTEEHHL RDYFEEYGKIDTIEIITDRQSGKKRGFGFVTFDDHDPVDKIVLQKYHTINGHNAEVRK ALSRQE
Host:	Rabbit
Clonality:	Polyclonal
Isotype:	IgG
Conjugate:	Unconjugated
Purification:	Affinity purification.
Molecular Weight:	36 - 38 kDa
Product Form:	Liquid
Formulation:	Supplied in Phosphate Buffered Saline, pH 7.3, with 50% Glycerol and 0.02% Sodium Azide.
Storage:	Shipped at 4°C. Upon delivery aliquot and store at -20°C. Avoid freeze / thaw cycles.
Disclaimer:	This product is for research use only. It is not intended for diagnostic or therapeutic use.

Anti-hnRNP A2B1 Antibody (A13338)

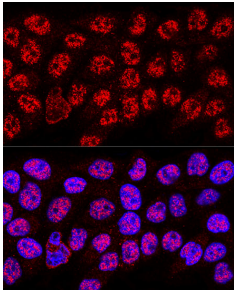
Images:



Western blot analysis of extracts from normal (control) and HNRNPA2B1 knockout (KO) 293T cells, using Anti-hnRNP A2B1 Antibody (A13338) at 1:1,000 dilution. The secondary antibody was Goat Anti-Rabbit IgG H&L Antibody (HRP) at 1:10,000 dilution. Lysates/proteins were present at 25µg per lane. The blocking buffer used was 3% non-fat dry milk in TBST. Detection was with a ECL Basic Kit. Exposure time: 1s.



Western blot analysis of various lysates, using Anti-hnRNP A2B1 Antibody (A13338) at 1:3,500 dilution. The secondary antibody was Goat Anti-Rabbit IgG H&L Antibody (HRP) at 1:10,000 dilution. Lysates/proteins were present at 25µg per lane. The blocking buffer used was 3% non-fat dry milk in TBST. Detection was with a ECL Basic Kit. Exposure time: 30s.



Confocal immunofluorescence analysis of HeLa cells using Anti-hnRNP A2B1 Antibody (A13338) at a dilution of 1:400. DAPI was used to stain the cell nuclei (blue).