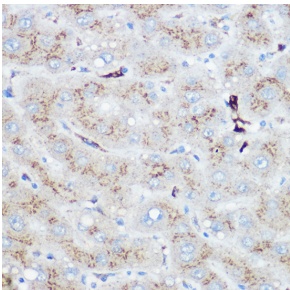


Anti-Heme Oxygenase 1 Antibody (A13434)

Specifications:

Name:	Anti-Heme Oxygenase 1 Antibody
Description:	Rabbit polyclonal antibody to Heme Oxygenase 1.
Applications:	IHC, ICC/IF
Recommended Dilutions:	IHC: 1:50-1:200, ICC/IF: 1:50-1:200
Reactivity:	Human, Mouse, Rat
Immunogen:	A synthetic peptide corresponding to a sequence within amino acids 200-290 of human Heme Oxygenase 1 (HO-1/HMOX1) (NP_002124.1).
Sequence:	IEEAKTAFLLNIQLFEELQELLTHDTKDQSPSRAPGLRQRASNKVQDSAPVETPRGKP PLNTRSQAPLLRWVLTLSFLVATVAVGLYAM//
Host:	Rabbit
Clonality:	Polyclonal
Isotype:	IgG
Conjugate:	Unconjugated
Purification:	Affinity purification.
Product Form:	Liquid
Formulation:	Supplied in Phosphate Buffered Saline, pH 7.3, with 50% Glycerol and 0.01% Thiomersal.
Storage:	Shipped at 4°C. Upon delivery aliquot and store at -20°C. Avoid freeze / thaw cycles.
Disclaimer:	This product is for research use only. It is not intended for diagnostic or therapeutic use.

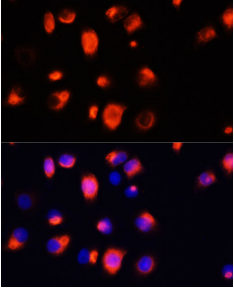
Images:



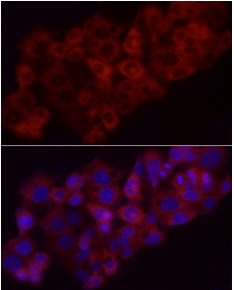
Immunohistochemistry analysis of paraffin-embedded human liver using Anti-Heme Oxygenase 1 Antibody (A13434) at a dilution of 1:100 (40x lens). Perform high pressure antigen retrieval with 10 mM citrate buffer pH 6.0 before commencing with IHC staining protocol.

Anti-Heme Oxygenase 1 Antibody (A13434)

Images continued:



Immunofluorescence analysis of HeLa cells using Anti-Heme Oxygenase 1 Antibody (A13434) at a dilution of 1:100 (40x lens). DAPI was used to stain the cell nuclei (blue).



Immunofluorescence analysis of HepG2 cells using Anti-Heme Oxygenase 1 Antibody (A13434) at a dilution of 1:100 (40x lens). DAPI was used to stain the cell nuclei (blue).