

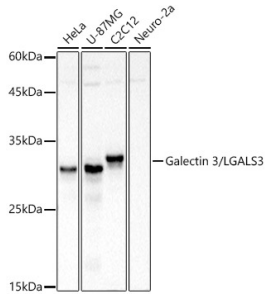
Anti-Galectin 3 Antibody (A13461)

Specifications:

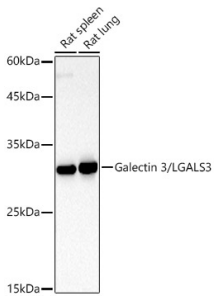
Name:	Anti-Galectin 3 Antibody
Description:	Rabbit polyclonal antibody to Galectin 3.
Applications:	WB, ICC/IF
Recommended Dilutions:	WB: 1:100-1:500, ICC/IF: 1:50-1:200
Reactivity:	Human, Rat
Immunogen:	Recombinant fusion protein containing a sequence corresponding to amino acids 1-250 of human Galectin 3/Galectin 3/LGALS3 (NP_002297.2).
Sequence:	MADNFSLHDALSGSGNPNPQGWPAGWGNQPAGAGGYPGASYPGAYPGQAPPGAYPGQA PPGAYPGAPGAYPGAPAPGVYPGPPSGPGAYPSSGQPSATGAYPATGPYGAPAGPLIV PYNLPLPGGVVPRMLITILGTVKPNANRIALDFQRGNDVAFHFNPRFNENRRVIVCN TKLDNNWGREERQSVFPFESGKPFKIQLVPEPDHFKVAVNDAHLLQYNHRVKKLNEIS KLGISGDIDLTSASYTMI
Host:	Rabbit
Clonality:	Polyclonal
Isotype:	IgG
Conjugate:	Unconjugated
Purification:	Affinity purification.
Product Form:	Liquid
Formulation:	Supplied in Phosphate Buffered Saline, pH 7.3, with 50% Glycerol and 0.05% Proclin 300.
Storage:	Shipped at 4°C. Upon delivery aliquot and store at -20°C. Avoid freeze / thaw cycles.
Disclaimer:	This product is for research use only. It is not intended for diagnostic or therapeutic use.

Anti-Galectin 3 Antibody (A13461)

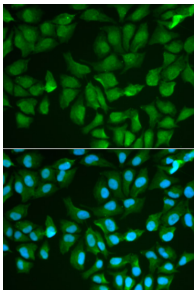
Images:



Western blot analysis of extracts of various cell lines, using Anti-Galectin 3 Antibody (A13461) at 1:500 dilution. The secondary antibody was Goat Anti-Rabbit IgG H&L Antibody (HRP) at 1:10,000 dilution. Lysates/proteins were present at 25 μ g per lane. The blocking buffer used was 3% non-fat dry milk in TBST. Detection was with a ECL Basic Kit. Exposure time: 0.5s.



Western blot analysis of extracts of various cell lines, using Anti-Galectin 3 Antibody (A13461) at 1:500 dilution. The secondary antibody was Goat Anti-Rabbit IgG H&L Antibody (HRP) at 1:10,000 dilution. Lysates/proteins were present at 25 μ g per lane. The blocking buffer used was 3% non-fat dry milk in TBST. Detection was with a ECL Basic Kit. Exposure time: 30s.



Immunofluorescence analysis of MCF-7 cells using Anti-Galectin 3 Antibody (A13461). DAPI was used to stain the cell nuclei (blue).