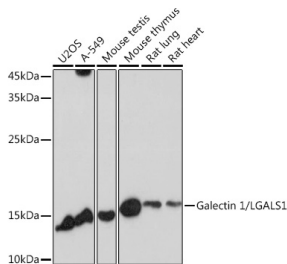


# Anti-Galectin 1 Antibody (A13521)

## Specifications:

|                        |  |
|------------------------|--|
| Name:                  | Anti-Galectin 1 Antibody   |
| Description:           | Rabbit polyclonal antibody to Galectin 1.  |
| Applications:          | WB, ICC/IF   |
| Recommended Dilutions: | WB: 1:500-1:1,000, ICC/IF: 1:50-1:200  |
| Reactivity:            | Human, Mouse, Rat  |
| Immunogen:             | Recombinant fusion protein containing a sequence corresponding to amino acids 1-135 of human Galectin 1/Galectin 1/LGALS1 (NP_002296.1).         |
| Sequence:              | MACGLVASNLNLKPGDECLRVRGEVAPDAKSFVLNLGKDSNNLCLHFNPRFNAHGDANT<br>IVCNSKDGGAWGTEQREAVFPFQPGSVAEVCITFDQANLTVKLPDGYEFKFPNRLNLE<br>AINYMAADGDFKIKCVAFD |
| Host:                  | Rabbit   |
| Clonality:             | Polyclonal   |
| Isotype:               | IgG  |
| Conjugate:             | Unconjugated   |
| Purification:          | Affinity purification.   |
| Molecular Weight:      | 14 kDa   |
| Product Form:          | Liquid   |
| Formulation:           | Supplied in Phosphate Buffered Saline, pH 7.3, with 50% Glycerol and 0.05% Proclin 300.  |
| Storage:               | Shipped at 4°C. Upon delivery aliquot and store at -20°C. Avoid freeze / thaw cycles.  |
| Disclaimer:            | This product is for research use only. It is not intended for diagnostic or therapeutic use.   |

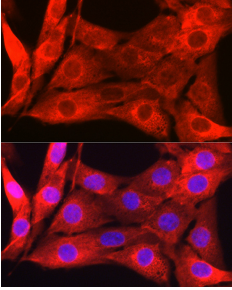
## Images:



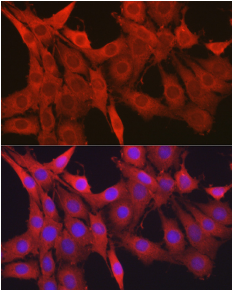
Western blot analysis of extracts of various cell lines, using Anti-Galectin 1 Antibody (A13521) at 1:1,000 dilution. The secondary antibody was Goat Anti-Rabbit IgG H&L Antibody (HRP) at 1:10,000 dilution. Lysates/proteins were present at 25µg per lane. The blocking buffer used was 3% non-fat dry milk in TBST. Detection was with a ECL Basic Kit. Exposure time: 30s.

## Anti-Galectin 1 Antibody (A13521)

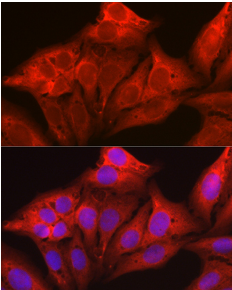
Images continued:



Immunofluorescence analysis of NIH/3T3 cells using Anti-Galectin 1 Antibody (A13521) at a dilution of 1:50 (40x lens). DAPI was used to stain the cell nuclei (blue).



Immunofluorescence analysis of PC-12 cells using Anti-Galectin 1 Antibody (A13521) at a dilution of 1:50 (40x lens). DAPI was used to stain the cell nuclei (blue).



Immunofluorescence analysis of U2OS cells using Anti-Galectin 1 Antibody (A13521) at a dilution of 1:50 (40x lens). DAPI was used to stain the cell nuclei (blue).