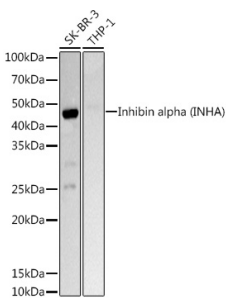


## Anti-Inhibin alpha Antibody (A13623)

### Specifications:

Name:	Anti-Inhibin alpha Antibody
Description:	Rabbit polyclonal antibody to Inhibin alpha.
Applications:	WB, IHC
Recommended Dilutions:	WB: 1:500-1:1,000, IHC: 1:50-1:200
Reactivity:	Human, Mouse, Rat
Immunogen:	A synthetic peptide corresponding to a sequence within amino acids 200-300 of human Inhibin alpha (INHA) (NP_002182.1).
Sequence:	CPLCTCSARPEATPFLVAHTRTRPPSGGERARRSTPLMSWPWSPSALRLLQRPPEEPA AHANCHRVALNISFQELGWERWIVYPPSFIFHYCHGGCGLHIP
Host:	Rabbit
Clonality:	Polyclonal
Isotype:	IgG
Conjugate:	Unconjugated
Purification:	Affinity purification.
Molecular Weight:	45 kDa
Product Form:	Liquid
Formulation:	Supplied in Phosphate Buffered Saline, pH 7.3, with 50% Glycerol and 0.05% Proclin 300.
Storage:	Shipped at 4°C. Upon delivery aliquot and store at -20°C. Avoid freeze / thaw cycles.
Disclaimer:	This product is for research use only. It is not intended for diagnostic or therapeutic use.

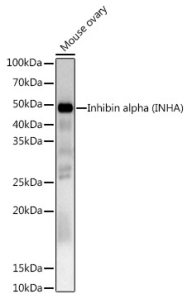
### Images:



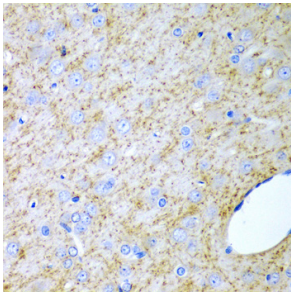
Western blot analysis of extracts of various cell lines, using Anti-Inhibin alpha Antibody (A13623) at 1:1,000 dilution. The secondary antibody was Goat Anti-Rabbit IgG H&L Antibody (HRP) at 1:10,000 dilution. Lysates/proteins were present at 25µg per lane. The blocking buffer used was 3% non-fat dry milk in TBST. Detection was with a ECL Basic Kit. Exposure time: 1s.

## Anti-Inhibin alpha Antibody (A13623)

Images continued:



Western blot analysis of extracts of Mouse ovary, using Anti-Inhibin alpha Antibody (A13623) at 1:1,000 dilution. The secondary antibody was Goat Anti-Rabbit IgG H&L Antibody (HRP) at 1:10,000 dilution. Lysates/proteins were present at 25 $\mu$ g per lane. The blocking buffer used was 3% non-fat dry milk in TBST. Detection was with a ECL Basic Kit. Exposure time: 180s.



Immunohistochemistry analysis of paraffin-embedded rat brain using Anti-Inhibin alpha Antibody (A13623) at a dilution of 1:200 (40x lens). Perform microwave antigen retrieval with 10 mM PBS buffer pH 7.2 before commencing with IHC staining protocol.