

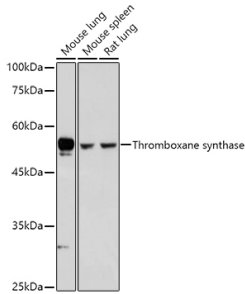
## Anti-Thromboxane synthase Antibody (A13792)

### Specifications:

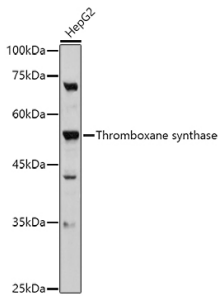
Name:	Anti-Thromboxane synthase Antibody
Description:	Rabbit polyclonal antibody to Thromboxane synthase.
Applications:	WB, IHC
Recommended Dilutions:	WB: 1:100-1:500, IHC: 1:50-1:200
Reactivity:	Human, Mouse, Rat
Immunogen:	Recombinant fusion protein containing a sequence corresponding to amino acids 407-533 of human Thromboxane synthase (NP_001052.3).
Sequence:	AFRFTREAAQDCEVLGQRIPAGAVLEMAVGALHHDPEHWSPETFNPERFTAEARQQH RPFTYLPFGAGPRSC LGVRLGLLEVKL TLLHVLHKFRFQACPETQVPLQLESKSALGP KNGVYIKIVSR
Host:	Rabbit
Clonality:	Polyclonal
Isotype:	IgG
Conjugate:	Unconjugated
Purification:	Affinity purification.
Molecular Weight:	55 kDa
Product Form:	Liquid
Formulation:	Supplied in Phosphate Buffered Saline, pH 7.3, with 50% Glycerol and 0.01% Thiomersal.
Storage:	Shipped at 4°C. Upon delivery aliquot and store at -20°C. Avoid freeze / thaw cycles.
Disclaimer:	This product is for research use only. It is not intended for diagnostic or therapeutic use.

## Anti-Thromboxane synthase Antibody (A13792)

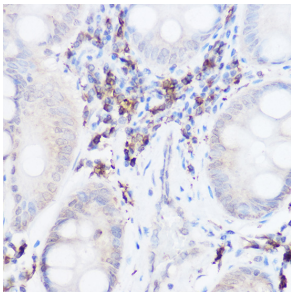
### Images:



Western blot analysis of extracts of various cell lines, using Anti-Thromboxane synthase Antibody (A13792) at 1:500 dilution. The secondary antibody was Goat Anti-Rabbit IgG H&L Antibody (HRP) at 1:10,000 dilution. Lysates/proteins were present at 25 $\mu$ g per lane. The blocking buffer used was 3% non-fat dry milk in TBST. Detection was with a ECL Basic Kit. Exposure time: 5s.



Western blot analysis of extracts of HepG2 cells, using Anti-Thromboxane synthase Antibody (A13792) at 1:500 dilution. The secondary antibody was Goat Anti-Rabbit IgG H&L Antibody (HRP) at 1:10,000 dilution. Lysates/proteins were present at 25 $\mu$ g per lane. The blocking buffer used was 3% non-fat dry milk in TBST. Detection was with a ECL Basic Kit. Exposure time: 90s.



Immunohistochemistry analysis of paraffin-embedded human colon carcinoma tissue using Anti-Thromboxane synthase Antibody (A13792) at a dilution of 1:50 (40x lens). Perform high pressure antigen retrieval with 10 mM citrate buffer pH 6.0 before commencing with IHC staining protocol.