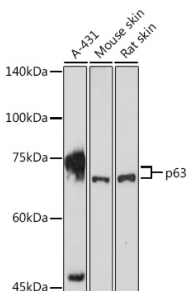


## Anti-p63 Antibody (A13902)

### Specifications:

Name:	Anti-p63 Antibody
Description:	Rabbit polyclonal antibody to p63.
Applications:	WB, IHC
Recommended Dilutions:	WB: 1:500-1:2,000, IHC: 1:50-1:200
Reactivity:	Human, Mouse, Rat
Immunogen:	A synthetic peptide corresponding to a sequence within amino acids 1-100 of human p63 (NP_001108452.1).
Sequence:	MLYLENNAQTQFSEPQYTNLGLLNSMDQQIQNGSSSTSPYNTDHAQNSVTAPSPYAQP SSTFDALSPSPAIPSNTDYPGPHSFDVSFQQSSTAKSATWTY
Host:	Rabbit
Clonality:	Polyclonal
Isotype:	IgG
Conjugate:	Unconjugated
Purification:	Affinity purification.
Molecular Weight:	75 kDa
Product Form:	Liquid
Formulation:	Supplied in Phosphate Buffered Saline, pH 7.3, with 50% Glycerol and 0.01% Thiomersal.
Storage:	Shipped at 4°C. Upon delivery aliquot and store at -20°C. Avoid freeze / thaw cycles.
Disclaimer:	This product is for research use only. It is not intended for diagnostic or therapeutic use.

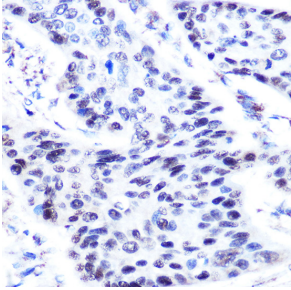
### Images:



Western blot analysis of extracts of various cell lines, using Anti-p63 Antibody (A13902) at 1:1,000 dilution. The secondary antibody was Goat Anti-Rabbit IgG H&L Antibody (HRP) at 1:10,000 dilution. Lysates/proteins were present at 25µg per lane. The blocking buffer used was 3% non-fat dry milk in TBST. Detection was with a ECL Basic Kit. Exposure time: 3min.

## Anti-p63 Antibody (A13902)

Images continued:



Immunohistochemistry analysis of paraffin-embedded human esophageal cancer using Anti-p63 Antibody (A13902) at a dilution of 1:50 (40x lens). Perform microwave antigen retrieval with 10 mM Tris/EDTA buffer pH 9.0 before commencing with IHC staining protocol.