

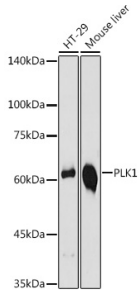
Anti-PLK1 Antibody (A14053)

Specifications:

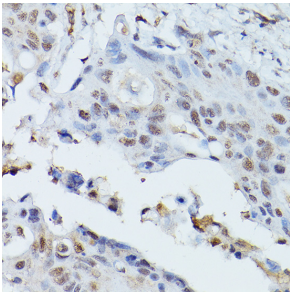
| | |
|------------------------|--|
| Name: | Anti-PLK1 Antibody |
| Description: | Rabbit polyclonal antibody to PLK1. |
| Applications: | WB, IHC, ICC/IF |
| Recommended Dilutions: | WB: 1:500-1:1,000, IHC: 1:50-1:200, ICC/IF: 1:50-1:200 |
| Reactivity: | Human, Mouse, Rat |
| Immunogen: | Recombinant fusion protein containing a sequence corresponding to amino acids 304-603 of human PLK1 (NP_005021.2). |
| Sequence: | FFTSGYIPARLPITCLTIPPRFSIAPSSLDPSNRKPLTVLNKGLNPLPERPREKEEP VVRETGEVVDCHLSDMLQQLHSVNASKPSERGLVRQEEAEDPACIPIFWVSKWVDYSD KYGLGYQLCDNSVGVLFNDSTRILILYNDGDSLQYIERDGTESYLTVSSHNSLMKKIT LLKYFRNYMSEHLLKAGANITPREGDELARLPYLRTWFRTRSAILHLSNGSVQINFF QDHTKLILCPLMAAVTYIDEKRDFRTYRLSLLEEYGCCKELASRLRYARTMVDKLLSS RSASNRLKAS |
| Host: | Rabbit |
| Clonality: | Polyclonal |
| Isotype: | IgG |
| Conjugate: | Unconjugated |
| Purification: | Affinity purification. |
| Molecular Weight: | 62 kDa |
| Product Form: | Liquid |
| Formulation: | Supplied in Phosphate Buffered Saline, pH 7.3, with 50% Glycerol and 0.02% Sodium Azide. |
| Storage: | Shipped at 4°C. Upon delivery aliquot and store at -20°C. Avoid freeze / thaw cycles. |
| Disclaimer: | This product is for research use only. It is not intended for diagnostic or therapeutic use. |

Anti-PLK1 Antibody (A14053)

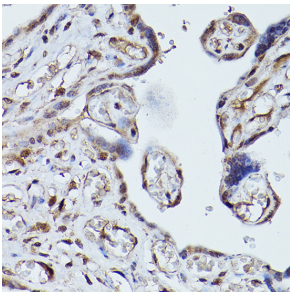
Images:



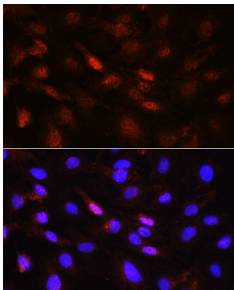
Western blot analysis of extracts of various cell lines, using Anti-PLK1 Antibody (A14053) at 1:1,000 dilution. The secondary antibody was Goat Anti-Rabbit IgG H&L Antibody (HRP) at 1:10,000 dilution. Lysates/proteins were present at 25 μ g per lane. The blocking buffer used was 3% non-fat dry milk in TBST. Detection was with a ECL Basic Kit. Exposure time: 10s.



Immunohistochemistry analysis of paraffin-embedded human colon carcinoma tissue using Anti-PLK1 Antibody (A14053) at a dilution of 1:100 (40x lens). Perform high pressure antigen retrieval with 10 mM citrate buffer pH 6.0 before commencing with IHC staining protocol.



Immunohistochemistry analysis of paraffin-embedded human placenta using Anti-PLK1 Antibody (A14053) at a dilution of 1:100 (40x lens). Perform high pressure antigen retrieval with 10 mM citrate buffer pH 6.0 before commencing with IHC staining protocol.



Immunofluorescence analysis of C6 cells using Anti-PLK1 Antibody (A14053) at a dilution of 1:100 (40x lens). DAPI was used to stain the cell nuclei (blue).