

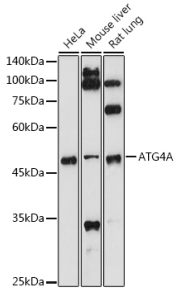
Anti-ATG4A Antibody (A14097)

Specifications:

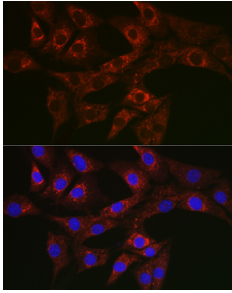
Name:	Anti-ATG4A Antibody
Description:	Rabbit polyclonal antibody to ATG4A.
Applications:	WB, ICC/IF
Recommended Dilutions:	WB: 1:100-1:500, ICC/IF: 1:50-1:200
Reactivity:	Human, Mouse, Rat
Immunogen:	Recombinant fusion protein containing a sequence corresponding to amino acids 210-398 of human ATG4A (NP_443168.2).
Sequence:	SKGTSAYCSAWKPLLLIVPLRLGINQINPVYVDAFKECFKMPQSLGALGGKPNNAYYF IGFLGDELIFLDPHTTQTFVDTEENGTVNDQTFHCLQSPQRMNILNLDPSVALGFFCK EEKDFDNWC SLVQKEILKENLRMFELVQKHPSHWPPFVPPAKPEVTTTGAEFIDSTEQ LEEFDLEEDFEILSV
Host:	Rabbit
Clonality:	Polyclonal
Isotype:	IgG
Conjugate:	Unconjugated
Purification:	Affinity purification.
Molecular Weight:	48 kDa
Product Form:	Liquid
Formulation:	Supplied in Phosphate Buffered Saline, pH 7.3, with 50% Glycerol and 0.05% Proclin 300.
Storage:	Shipped at 4°C. Upon delivery aliquot and store at -20°C. Avoid freeze / thaw cycles.
Disclaimer:	This product is for research use only. It is not intended for diagnostic or therapeutic use.

Anti-ATG4A Antibody (A14097)

Images:



Western blot analysis of extracts of various cell lines, using Anti-ATG4A Antibody (A14097) at 1:500 dilution. The secondary antibody was Goat Anti-Rabbit IgG H&L Antibody (HRP) at 1:10,000 dilution. Lysates/proteins were present at 25 μ g per lane. The blocking buffer used was 3% non-fat dry milk in TBST. Detection was with a ECL Basic Kit. Exposure time: 180s.



Immunofluorescence analysis of NIH/3T3 cells using Anti-ATG4A Antibody (A14097) at a dilution of 1:50 (40x lens). DAPI was used to stain the cell nuclei (blue).