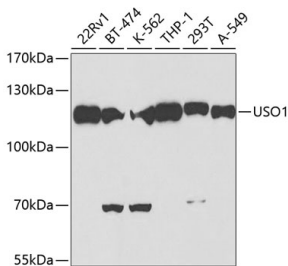


Anti-USO1 Antibody (A14199)

Specifications:

Name:	Anti-USO1 Antibody
Description:	Rabbit polyclonal antibody to USO1.
Applications:	WB, IHC, IF
Recommended Dilutions:	WB: 1:500-1:2000, IHC: 1:50-1:200, IF: 1:50-1:200
Reactivity:	Human, Mouse
Immunogen:	A synthetic peptide of human USO1.
Host:	Rabbit
Clonality:	Polyclonal
Isotype:	IgG
Conjugate:	Unconjugated
Purification:	Affinity purification.
Molecular Weight:	115kDa
Formulation:	Supplied in Phosphate Buffered Saline, pH 7.30, with 0.02% Sodium Azide and 50% Glycerol.
Storage:	Shipped at 4°C. Upon delivery aliquot and store at -20°C. Avoid freeze / thaw cycles.
Disclaimer:	This product is for research use only. It is not intended for diagnostic or therapeutic use.

Images:



Western blot analysis of extracts of various cell lines, using Anti-USO1 Antibody (A2796) at 1:500 dilution.

Secondary antibody: Goat Anti-Rabbit IgG (H+L) (HRP) (AS014) at 1:10,000 dilution.

Lysates / proteins: 25µg per lane.

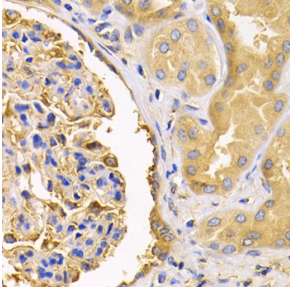
Blocking buffer: 3% non-fat dry milk in TBST.

Detection: ECL Basic Kit (RM00020).

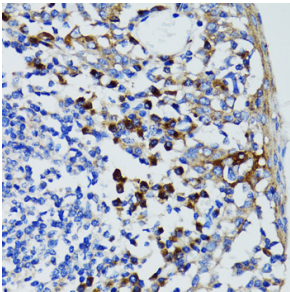
Exposure time: 90s.

Anti-USO1 Antibody (A14199)

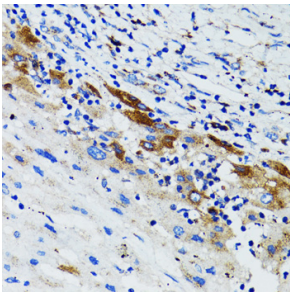
Images continued:



Immunohistochemistry of paraffin-embedded human kidney using Anti-USO1 Antibody (A2796) at dilution of 1:200 (40x lens).



Immunohistochemistry of paraffin-embedded human tonsil using Anti-USO1 Antibody (A2796) at dilution of 1:100 (40x lens).



Immunohistochemistry of paraffin-embedded human liver cancer using Anti-USO1 Antibody (A2796) at dilution of 1:100 (40x lens).