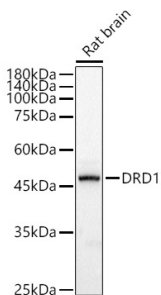


## Anti-Dopamine Receptor D1 Antibody (A14240)

### Specifications:

Name:	Anti-Dopamine Receptor D1 Antibody
Description:	Rabbit polyclonal antibody to Dopamine Receptor D1.
Applications:	WB
Recommended Dilutions:	WB: 1:500-1:1,000
Reactivity:	Rat
Immunogen:	Recombinant fusion protein containing a sequence corresponding to amino acids 338-446 of human DRD1 (NP_000785.1).
Sequence:	RKAFSTLLGCYRLCPATNNAIETVSINNGAAMFSSHHEPRGSISKECNLVYLIPHAV GSSEDLKKEEAAGIARPLEKLSPALSVILDYDTDVSLEKIQPITQNGQHPT
Host:	Rabbit
Clonality:	Polyclonal
Isotype:	IgG
Conjugate:	Unconjugated
Purification:	Affinity purification.
Molecular Weight:	49 kDa
Product Form:	Liquid
Formulation:	Supplied in Phosphate Buffered Saline, pH 7.3, with 50% Glycerol and 0.05% Proclin 300.
Storage:	Shipped at 4°C. Upon delivery aliquot and store at -20°C. Avoid freeze / thaw cycles.
Disclaimer:	This product is for research use only. It is not intended for diagnostic or therapeutic use.

### Images:



Western blot analysis of extracts of Rat brain, using Anti-Dopamine Receptor D1 Antibody (A14240) at 1:600 dilution. The secondary antibody was Goat Anti-Rabbit IgG H&L Antibody (HRP) at 1:10,000 dilution. Lysates/proteins were present at 25µg per lane. The blocking buffer used was 3% non-fat dry milk in TBST. Detection was with a ECL Basic Kit. Exposure time: 0. 2s.