

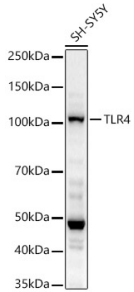
Anti-TLR4 Antibody (A14637)

Specifications:

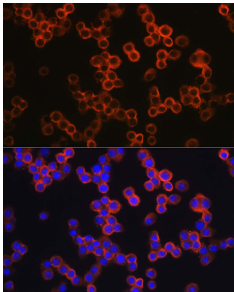
Name:	Anti-TLR4 Antibody
Description:	Rabbit polyclonal antibody to TLR4.
Applications:	WB, ICC/IF
Recommended Dilutions:	WB: 1:1,000-1:5,000, ICC/IF: 1:50-1:200
Reactivity:	Human, Mouse, Rat
Immunogen:	Recombinant fusion protein containing a sequence corresponding to amino acids 470-630 of human TLR4 (NP_612564.1).
Sequence:	LSSLEVLKMAGNSFQENFLPDIFTELRLNLTFLDLSQCQLEQLSPTAFNSLSSLQVLNM SHNFFSLDTPYKCLNSLQVLDYSLNHIMTSKKQELQHFSSLAFLNLTQNDFACTC EHQSFLQWIKDQRQLLVEVERMECATPSDKQGMPVLSLNITCQMN
Host:	Rabbit
Clonality:	Polyclonal
Isotype:	IgG
Conjugate:	Unconjugated
Purification:	Affinity purification.
Molecular Weight:	110 kDa
Product Form:	Liquid
Formulation:	Supplied in Phosphate Buffered Saline, pH 7.3, with 50% Glycerol and 0.05% Proclin 300.
Storage:	Shipped at 4°C. Upon delivery aliquot and store at -20°C. Avoid freeze / thaw cycles.
Disclaimer:	This product is for research use only. It is not intended for diagnostic or therapeutic use.

Anti-TLR4 Antibody (A14637)

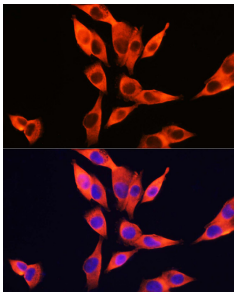
Images:



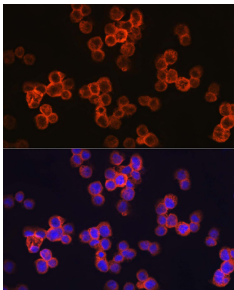
Western blot analysis of SH-SY5Y, using Anti-TLR4 Antibody (A14637) at 1:2,000 dilution. The secondary antibody was Goat Anti-Rabbit IgG H&L Antibody (HRP) at 1:10,000 dilution. Lysates/proteins were present at 25µg per lane. The blocking buffer used was 3% non-fat dry milk in TBST. Detection was with a ECL Basic Kit. Exposure time: 30s.



Immunofluorescence analysis of RAW264.7 cells using Anti-TLR4 Antibody (A14637) at a dilution of 1:200 (40x lens). DAPI was used to stain the cell nuclei (blue).



Immunofluorescence analysis of HepG2 cells using Anti-TLR4 Antibody (A14637) at a dilution of 1:200 (40x lens). DAPI was used to stain the cell nuclei (blue).



Immunofluorescence analysis of THP-1 cells using Anti-TLR4 Antibody (A14637) at a dilution of 1:200 (40x lens). DAPI was used to stain the cell nuclei (blue).