

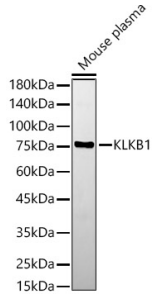
Anti-Plasma Kallikrein 1B Antibody (A14665)

Specifications:

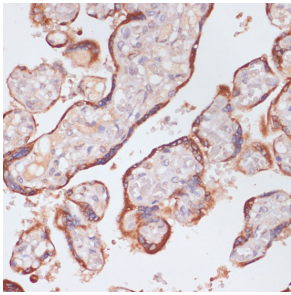
Name:	Anti-Plasma Kallikrein 1B Antibody
Description:	Rabbit polyclonal antibody to Plasma Kallikrein 1B.
Applications:	WB, IHC
Recommended Dilutions:	WB: 1:500-1:1,000, IHC: 1:50-1:200
Reactivity:	Human, Mouse, Rat
Immunogen:	Recombinant fusion protein containing a sequence corresponding to amino acids 20-300 of human KLKB1 (NP_000883.2).
Sequence:	GCLTQLYENAFFRGGDVASMYTPNAQYQCQMRCTFHPRCLLFSFLPASSINDMEKRFGC FLKDSVTGTLPKVHRTGAVSGHSLKQCGHQISACHRDIYKGVDMRGVNFNVSKVSSVE ECQKRCTSNIRCQFFSYATQTFHKAEYRNNCLLKYSPPGGTPTAIKVLSNVESGFSLKP CALSEIGCHMNIFQHAFSDVDVARVLTPDAFVCRTICTYHPNCLFFTFYTNVWKIES QRNVCLLKTSESGTPSSSTPQENTISGYSLLTCKRTLPEPCHSKIYPGV
Host:	Rabbit
Clonality:	Polyclonal
Isotype:	IgG
Conjugate:	Unconjugated
Purification:	Affinity purification.
Molecular Weight:	80 kDa
Product Form:	Liquid
Formulation:	Supplied in Phosphate Buffered Saline, pH 7.3, with 50% Glycerol and 0.01% Thiomersal.
Storage:	Shipped at 4°C. Upon delivery aliquot and store at -20°C. Avoid freeze / thaw cycles.
Disclaimer:	This product is for research use only. It is not intended for diagnostic or therapeutic use.

Anti-Plasma Kallikrein 1B Antibody (A14665)

Images:



Western blot analysis of Mouse plasma, using Anti-Plasma Kallikrein 1B Antibody (A14665) at 1:600 dilution. The secondary antibody was Goat Anti-Rabbit IgG H&L Antibody (HRP) at 1:10,000 dilution. Lysates/proteins were present at 25 μ g per lane. The blocking buffer used was 3% non-fat dry milk in TBST. Detection was with a ECL Basic Kit. Exposure time: 120s.



Immunohistochemistry analysis of paraffin-embedded human placenta using Anti-Plasma Kallikrein 1B Antibody (A14665) at a dilution of 1:100 (40x lens). Perform microwave antigen retrieval with 10 mM PBS buffer pH 7.2 before commencing with IHC staining protocol.