

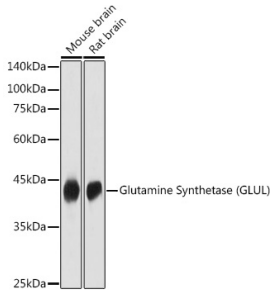
Anti-Glutamine Synthetase Antibody (A14757)

Specifications:

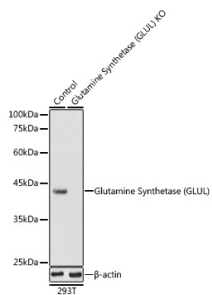
Name:	Anti-Glutamine Synthetase Antibody
Description:	Rabbit polyclonal antibody to Glutamine Synthetase.
Applications:	WB, IHC, ICC/IF
Recommended Dilutions:	WB: 1:500-1:1,000, IHC: 1:50-1:200, ICC/IF: 1:50-1:200
Reactivity:	Human, Mouse, Rat
Immunogen:	Recombinant fusion protein containing a sequence corresponding to amino acids 1-373 of human Glutamine Synthetase (Glutamine Synthetase (GLUL)) (NP_001028228.1).
Sequence:	MTTSASSHLNKGIKQVYMSLPQGEKVQAMYIWIDGTGEGLRCKTRTLTLDSEPKCVEELP EWNFDGSSTLQSEGSNSDMYLVPAAMFRDPFRKDPNKLVLCEVFKYNRRPAETNLRHT CKRIMDMVSNQHPWFGMEQEYTLMGTDGHPFGWPSNGFPGPQGPYYCGVGADRAYGRD IVEAHYRACLYAGVKIAGTNAEVMPAQWFEFQIGPCEGISMGDHLWVARFILHRVCEDF GVIATFDPKPIPGNWNGAGCHTNFSTKAMREENGLKYIEEAIEKLSKRHQYHIRAYDP KGGLDNARRLTGFHETSNINDFSAGVANRSASIRIPRTVGQEKKGYFEDRRPSANCDP FSVTEALIRTCLLNETGDEPFQYKN
Host:	Rabbit
Clonality:	Polyclonal
Isotype:	IgG
Conjugate:	Unconjugated
Purification:	Affinity purification.
Molecular Weight:	42 kDa
Product Form:	Liquid
Formulation:	Supplied in Phosphate Buffered Saline, pH 7.3, with 50% Glycerol and 0.02% Sodium Azide.
Storage:	Shipped at 4°C. Upon delivery aliquot and store at -20°C. Avoid freeze / thaw cycles.
Disclaimer:	This product is for research use only. It is not intended for diagnostic or therapeutic use.

Anti-Glutamine Synthetase Antibody (A14757)

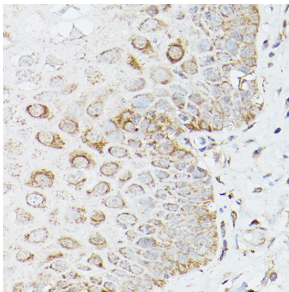
Images:



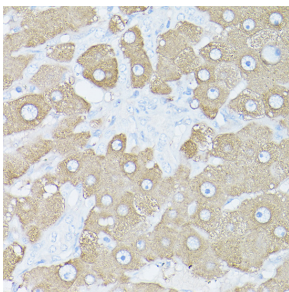
Western blot analysis of extracts of various cell lines, using Anti-Glutamine Synthetase Antibody (A14757) at 1:1,000 dilution. The secondary antibody was Goat Anti-Rabbit IgG H&L Antibody (HRP) at 1:10,000 dilution. Lysates/proteins were present at 25µg per lane. The blocking buffer used was 3% non-fat dry milk in TBST. Detection was with a ECL Basic Kit. Exposure time: 5s.



Western blot analysis of extracts from normal (control) and Glutamine Synthetase (GLUL) knockout (KO) 293T cells, using Anti-Glutamine Synthetase Antibody (A14757) at 1:1,000 dilution. The secondary antibody was Goat Anti-Rabbit IgG H&L Antibody (HRP) at 1:10,000 dilution. Lysates/proteins were present at 25µg per lane. The blocking buffer used was 3% non-fat dry milk in TBST. Detection was with a ECL Basic Kit. Exposure time: 5s.



Immunohistochemistry analysis of paraffin-embedded human esophageal using Anti-Glutamine Synthetase Antibody (A14757) at a dilution of 1:100 (40x lens). Perform high pressure antigen retrieval with 10 mM citrate buffer pH 6.0 before commencing with IHC staining protocol.



Immunohistochemistry analysis of paraffin-embedded human liver using Anti-Glutamine Synthetase Antibody (A14757) at a dilution of 1:100 (40x lens). Perform high pressure antigen retrieval with 10 mM citrate buffer pH 6.0 before commencing with IHC staining protocol.