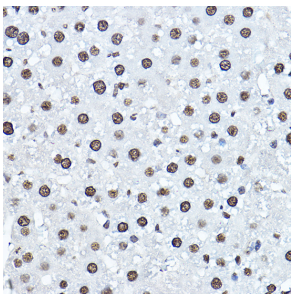


## Anti-Twist Antibody (A14821)

### Specifications:

Name:	Anti-Twist Antibody
Description:	Rabbit polyclonal antibody to Twist.
Applications:	IHC
Recommended Dilutions:	IHC: 1:50-1:200
Reactivity:	Human, Mouse, Rat
Immunogen:	A synthetic peptide corresponding to a sequence within amino acids 50-150 of human Twist (NP_000465.1).
Sequence:	AGPGGAAGGGVGGGDEPGSPAQGKRGKKSAGCGGGGGAGGGGGSSSGGGSPQSYEELQ TQRVMANVRERQRTQSLNEAFAALRKIIPTLPSDKLSKIQTLK
Host:	Rabbit
Clonality:	Polyclonal
Isotype:	IgG
Conjugate:	Unconjugated
Purification:	Affinity purification.
Molecular Weight:	30 kDa
Product Form:	Liquid
Formulation:	Supplied in Phosphate Buffered Saline, pH 7.3, with 50% Glycerol and 0.01% Thiomersal.
Storage:	Shipped at 4°C. Upon delivery aliquot and store at -20°C. Avoid freeze / thaw cycles.
Disclaimer:	This product is for research use only. It is not intended for diagnostic or therapeutic use.

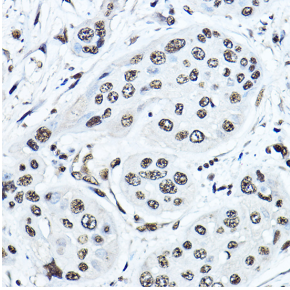
### Images:



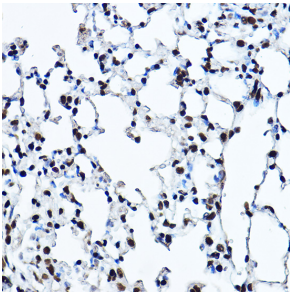
Immunohistochemistry analysis of paraffin-embedded rat liver using Anti-Twist Antibody (A14821) at a dilution of 1:200 (40x lens). Perform high pressure antigen retrieval with 10 mM citrate buffer pH 6.0 before commencing with IHC staining protocol.

## Anti-Twist Antibody (A14821)

Images continued:



Immunohistochemistry analysis of paraffin-embedded human esophageal cancer using Anti-Twist Antibody (A14821) at a dilution of 1:200 (40x lens). Perform high pressure antigen retrieval with 10 mM citrate buffer pH 6.0 before commencing with IHC staining protocol.



Immunohistochemistry analysis of paraffin-embedded mouse lung using Anti-Twist Antibody (A14821) at a dilution of 1:200 (40x lens). Perform high pressure antigen retrieval with 10 mM citrate buffer pH 6.0 before commencing with IHC staining protocol.