

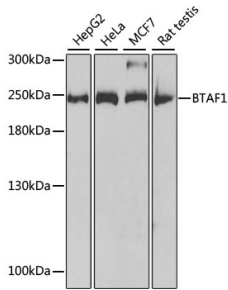
Anti-BTAF1 Antibody (A14990)

Specifications:

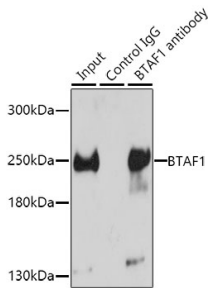
Name:	Anti-BTAF1 Antibody
Description:	Rabbit polyclonal antibody to BTAF1.
Applications:	WB, IHC, IP, ChIP
Recommended Dilutions:	WB: 1:500-1:2,000, IHC: 1:50-1:200, IP: 1:20-1:50, ChIP: 1:20-1:100
Reactivity:	Human, Rat
Immunogen:	Recombinant fusion protein containing a sequence corresponding to amino acids 1600-1849 of human BTAF1 (NP_003963.1).
Sequence:	LAVQNSSLHDIQHAPKLSALKQLLLDCLGNGSTSESGTESVVAQHRILIFCQLKSML DIVEHDLLKPHLPSVTYLRLDGSIPPGQRHSIVSRFNNDPSIDVLLLTTHVGGLGLNL TGADTVVFEHDWNPMDLQAMDRAHRIGQKRVVNVYRLITRGTLEEKIMGLQKFKMN IANTVISQENSSLQSMGTDQLLDLFTLDKDGKAEKADTSTSGKASMKSILENLSDLWD QEQYDSEYSLENFMHSLK
Host:	Rabbit
Clonality:	Polyclonal
Isotype:	IgG
Conjugate:	Unconjugated
Purification:	Affinity purification.
Molecular Weight:	250 kDa
Product Form:	Liquid
Formulation:	Supplied in Phosphate Buffered Saline, pH 7.3, with 50% Glycerol and 0.02% Sodium Azide.
Storage:	Shipped at 4°C. Upon delivery aliquot and store at -20°C. Avoid freeze / thaw cycles.
Disclaimer:	This product is for research use only. It is not intended for diagnostic or therapeutic use.

Anti-BTAF1 Antibody (A14990)

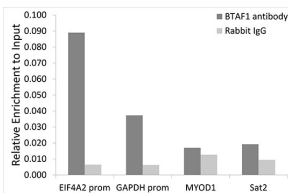
Images:



Western blot analysis of extracts of various cell lines, using Anti-BTAF1 Antibody (A14990) at 1:1,000 dilution. The secondary antibody was Goat Anti-Rabbit IgG H&L Antibody (HRP) at 1:10,000 dilution. Lysates/proteins were present at 25µg per lane. The blocking buffer used was 3% non-fat dry milk in TBST. Detection was with a ECL Basic Kit.



Immunoprecipitation analysis of 150µg extracts of HeLa cells using 3µg of Anti-BTAF1 Antibody (A14990). This Western blot was performed on the immunoprecipitate using Anti-BTAF1 Antibody (A14990) at a dilution of 1:500.



Chromatin immunoprecipitation (ChIP) analysis of extracts of HeLa cells, using Anti-BTAF1 Antibody (A14990) and Rabbit IgG. The amount of immunoprecipitated DNA was checked by quantitative PCR. Histogram was constructed by the ratios of the immunoprecipitated DNA to the input.