

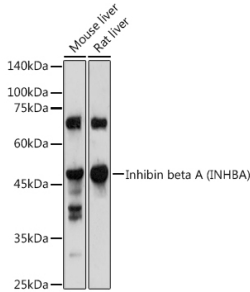
Anti-Inhibin beta A Antibody (A15007)

Specifications:

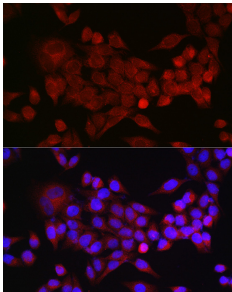
| | |
|------------------------|--|
| Name: | Anti-Inhibin beta A Antibody |
| Description: | Rabbit polyclonal antibody to Inhibin beta A. |
| Applications: | WB, ICC/IF |
| Recommended Dilutions: | WB: 1:500-1:1,000, ICC/IF: 1:50-1:200 |
| Reactivity: | Human, Mouse, Rat |
| Immunogen: | Recombinant fusion protein containing a sequence corresponding to amino acids 126-426 of human Inhibin beta A (INHBA) (NP_002183.1). |
| Sequence: | FAESGTARKTLHFEISKEGSDLSVVERAEVWFLKVPKANRTRTKVTIRLFQQQKHPQ GSLDTGEEAEVGLKGERSELLLSEKVVDARKSTWHVFPVSSSIQRLLDQGKSSLDVR IACEQCQESGASLVLLGKKKKKEEEGEGKKKGGGEGGAGADEEKEQSHRPFLMLQARQ SEDPHRRRRRRGLECDGKVNICCKKQFFVSKDIGWNDWIIAPSGYHANYCEGECPSH IAGTSGSSLSFHSTVINHYRMRGHSPFANLKSCCVPTKLRPMSMLYDDGQNIKKDI QNMIVEECGCS |
| Host: | Rabbit |
| Clonality: | Polyclonal |
| Isotype: | IgG |
| Conjugate: | Unconjugated |
| Purification: | Affinity purification. |
| Molecular Weight: | 47 kDa |
| Product Form: | Liquid |
| Formulation: | Supplied in Phosphate Buffered Saline, pH 7.3, with 50% Glycerol and 0.01% Thiomersal. |
| Storage: | Shipped at 4°C. Upon delivery aliquot and store at -20°C. Avoid freeze / thaw cycles. |
| Disclaimer: | This product is for research use only. It is not intended for diagnostic or therapeutic use. |

Anti-Inhibin beta A Antibody (A15007)

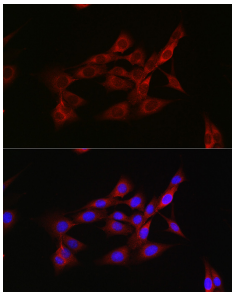
Images:



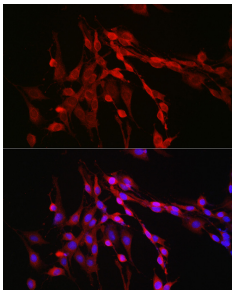
Western blot analysis of extracts of various cell lines, using Anti-Inhibin beta A Antibody (A15007) at 1:1,000 dilution. The secondary antibody was Goat Anti-Rabbit IgG H&L Antibody (HRP) at 1:10,000 dilution. Lysates/proteins were present at 25 μ g per lane. The blocking buffer used was 3% non-fat dry milk in TBST. Detection was with a ECL Enhanced Kit (RM00021). Exposure time: 180s.



Immunofluorescence analysis of HeLa cells using Anti-Inhibin beta A Antibody (A15007) at a dilution of 1:50 (40x lens). DAPI was used to stain the cell nuclei (blue).



Immunofluorescence analysis of NIH/3T3 cells using Anti-Inhibin beta A Antibody (A15007) at a dilution of 1:50 (40x lens). DAPI was used to stain the cell nuclei (blue).



Immunofluorescence analysis of PC-12 cells using Anti-Inhibin beta A Antibody (A15007) at a dilution of 1:50 (40x lens). DAPI was used to stain the cell nuclei (blue).