

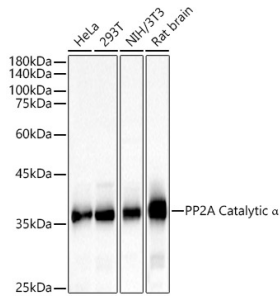
Anti-PP2A-alpha Antibody (A15336)

Specifications:

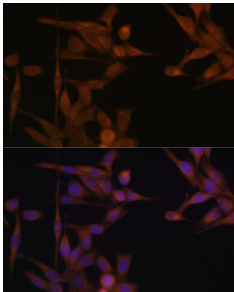
Name:	Anti-PP2A-alpha Antibody
Description:	Rabbit polyclonal antibody to PP2A-alpha.
Applications:	WB, ICC/IF, IP
Recommended Dilutions:	WB: 1:1,000-1:5,000, ICC/IF: 1:50-1:200, IP: 1:500-1:1,000
Reactivity:	Human, Mouse, Rat
Immunogen:	Recombinant fusion protein containing a sequence corresponding to amino acids 1-309 of human PP2A Catalytic a (NP_002706.1).
Sequence:	MDEKVFTKELDQWIEQLNECKQLSESQVKSLCEKAKEILTKESNVQEVRCPVTVCGDV HGQFHDLMELFRIGGKSPDTNYLFMGDYVDRGYYSVETVLLVALKVRYRERITILRG NHESRQITQVYGFYDECLRKYGNANVWKYFTDLFDYLPLTALVDGQIFCLHGGLSPSI DTLDHIRALDRLQEVPHEGPMCDLLWSDPDDRGGWGISPRGAGYTFGQDISETFNHAN GLTLVSRAHQLVMEGYNWCHDRNVVTIFSAPNYCYRCGNQAAIMELDDTLKYSFLQFD PAPRRGEPHVTRRTPDYFL
Host:	Rabbit
Clonality:	Polyclonal
Isotype:	IgG
Conjugate:	Unconjugated
Purification:	Affinity purification.
Molecular Weight:	36 kDa
Product Form:	Liquid
Formulation:	Supplied in Phosphate Buffered Saline, pH 7.3, with 50% Glycerol and 0.02% Sodium Azide.
Storage:	Shipped at 4°C. Upon delivery aliquot and store at -20°C. Avoid freeze / thaw cycles.
Disclaimer:	This product is for research use only. It is not intended for diagnostic or therapeutic use.

Anti-PP2A-alpha Antibody (A15336)

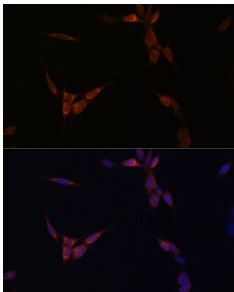
Images:



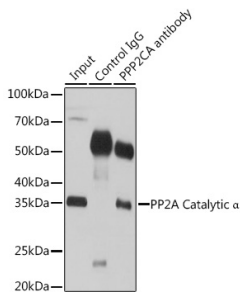
Western blot analysis of various lysates, using Anti-PP2A-alpha Antibody (A15336) at 1:2,000 dilution. The secondary antibody was Goat Anti-Rabbit IgG H&L Antibody (HRP) at 1:10,000 dilution. Lysates/proteins were present at 25µg per lane. The blocking buffer used was 3% non-fat dry milk in TBST. Detection was with a ECL Basic Kit. Exposure time: 10s.



Immunofluorescence analysis of HeLa cells using Anti-PP2A-alpha Antibody (A15336) at a dilution of 1:100. DAPI was used to stain the cell nuclei (blue).



Immunofluorescence analysis of NIH/3T3 cells using Anti-PP2A-alpha Antibody (A15336) at a dilution of 1:100. DAPI was used to stain the cell nuclei (blue).



Immunoprecipitation analysis of 200µg extracts of 293T cells using 3µg of Anti-PP2A-alpha Antibody (A15336). This Western blot was performed on the immunoprecipitate using Anti-PP2A-alpha Antibody (A15336) at a dilution of 1:1000.