

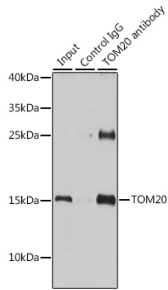
Anti-TOMM20 Antibody (A15372)

Specifications:

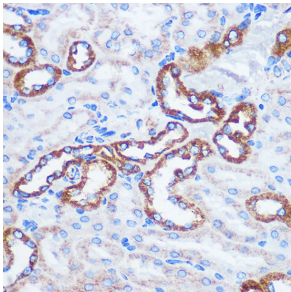
Name:	Anti-TOMM20 Antibody
Description:	Rabbit polyclonal antibody to TOMM20.
Applications:	WB, IHC, ICC/IF, IP
Recommended Dilutions:	WB: 1:500-1:2,000, IHC: 1:50-1:200, ICC/IF: 1:50-1:200, IP: 1:50-1:200
Reactivity:	Human, Mouse, Rat
Immunogen:	Recombinant fusion protein containing a sequence corresponding to amino acids 1-397 of human SETDB1 (NP_001230420.1).
Sequence:	MSSLPGCIGLDAATATVESEEIAELQQAVVEELGISMEELRHFIDEELEKMDCVQQRK KQLAELETWVIQKESEVAHVVDQLFDDASRAVTNCESLVKDFYSKLGQLQYRDSSSEDES SRPTEIIEIPDEDDVLSIDSGDAGSRTPKDQKLREAMAALRKSADVQKFMDAVNKK SSSQDLHKGTLSQMSGELSKDGLIVSMRILGKKRTKTWHKGTLIAIQTVGP GK KYK V KFDNKGKSLLSGNHIAYDYHPPADKLYVGSRVVAKYK DGNQVWLYAGIVAETPNVKNK LRF L I F D D G Y A S Y V T Q S E L Y P I C R P L K K T W E D I E D I S C R D F I E E Y V T A Y P N R P M V L L KSGQLIKTEWEGTWWKSRVEEVDGSLVRILFLVLFSTILEAEVGGGGT
Host:	Rabbit
Clonality:	Polyclonal
Isotype:	IgG
Conjugate:	Unconjugated
Purification:	Affinity purification.
Molecular Weight:	16 kDa
Product Form:	Liquid
Formulation:	Supplied in Phosphate Buffered Saline, pH 7.3, with 50% Glycerol and 0.05% Proclin 300.
Storage:	Shipped at 4°C. Upon delivery aliquot and store at -20°C. Avoid freeze / thaw cycles.
Disclaimer:	This product is for research use only. It is not intended for diagnostic or therapeutic use.

Anti-TOMM20 Antibody (A15372)

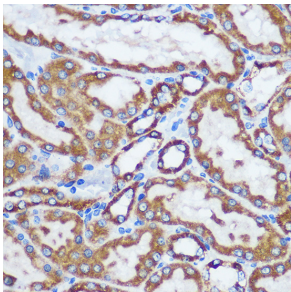
Images:



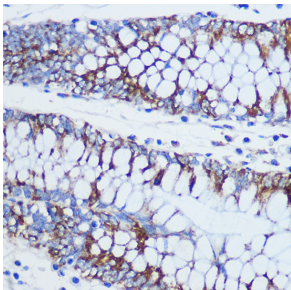
Immunoprecipitation analysis of 200 μ g extracts of HeLa cells using 3 μ g of Anti-TOMM20 Antibody (A15372). This Western blot was performed on the immunoprecipitate using Anti-TOMM20 Antibody (A15372) at a dilution of 1:1000.



Immunohistochemistry analysis of paraffin-embedded mouse kidney using Anti-TOMM20 Antibody (A15372) at a dilution of 1:100 (40x lens). Perform microwave antigen retrieval with 10 mM PBS buffer pH 7.2 before commencing with IHC staining protocol.



Immunohistochemistry analysis of paraffin-embedded rat kidney using Anti-TOMM20 Antibody (A15372) at a dilution of 1:100 (40x lens). Perform microwave antigen retrieval with 10 mM PBS buffer pH 7.2 before commencing with IHC staining protocol.



Immunohistochemistry analysis of paraffin-embedded human colon tissue using Anti-TOMM20 Antibody (A15372) at a dilution of 1:100 (40x lens). Perform microwave antigen retrieval with 10 mM PBS buffer pH 7.2 before commencing with IHC staining protocol.