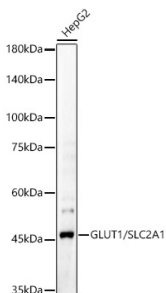


# Anti-Glucose Transporter GLUT1 Antibody (A15463)

## Specifications:

Name:	Anti-Glucose Transporter GLUT1 Antibody
Description:	Rabbit polyclonal antibody to Glucose Transporter GLUT1.
Applications:	WB, IHC
Recommended Dilutions:	WB: 1:500-1:1,000, IHC: 1:50-1:200
Reactivity:	Human, Mouse, Rat
Immunogen:	A synthetic peptide corresponding to a sequence within amino acids 400 to the C-terminus of human GLUT1/SLC2A1 (NP_006507.2).
Sequence:	RPAAIAVAGFSNWTSNFIIVGMCFQYVEQLCGPYVFIIFTVLLVLFIFTYFKVPETKG RTFDEIASGFRQGGASQSDKTPEELFHPLGADSQV
Host:	Rabbit
Clonality:	Polyclonal
Isotype:	IgG
Conjugate:	Unconjugated
Purification:	Affinity purification.
Molecular Weight:	45 kDa
Product Form:	Liquid
Formulation:	Supplied in Phosphate Buffered Saline, pH 7.3, with 50% Glycerol and 0.01% Thiomersal.
Storage:	Shipped at 4°C. Upon delivery aliquot and store at -20°C. Avoid freeze / thaw cycles.
Disclaimer:	This product is for research use only. It is not intended for diagnostic or therapeutic use.

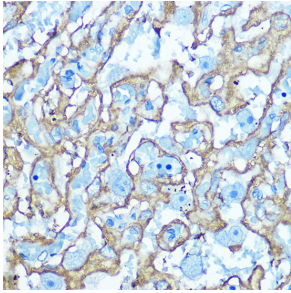
## Images:



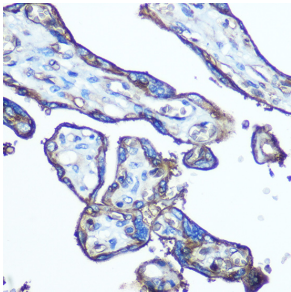
Western blot analysis of HepG2, using Anti-Glucose Transporter GLUT1 Antibody (A15463) at 1:700 dilution. The secondary antibody was Goat Anti-Rabbit IgG H&L Antibody (HRP) at 1:10,000 dilution. Lysates/proteins were present at 25µg per lane. The blocking buffer used was 3% non-fat dry milk in TBST. Detection was with a ECL Basic Kit. Exposure time: 180s.

## Anti-Glucose Transporter GLUT1 Antibody (A15463)

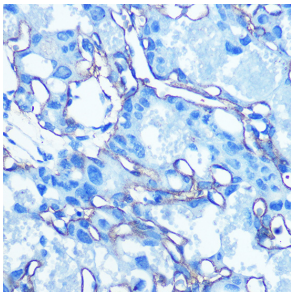
Images continued:



Immunohistochemistry analysis of paraffin-embedded rat placenta using Anti-Glucose Transporter GLUT1 Antibody (A15463) at a dilution of 1:100 (40x lens). Perform microwave antigen retrieval with 10 mM Tris/EDTA buffer pH 9.0 before commencing with IHC staining protocol.



Immunohistochemistry analysis of paraffin-embedded human placenta using Anti-Glucose Transporter GLUT1 Antibody (A15463) at a dilution of 1:100 (40x lens). Perform microwave antigen retrieval with 10 mM Tris/EDTA buffer pH 9.0 before commencing with IHC staining protocol.



Immunohistochemistry analysis of paraffin-embedded mouse placenta using Anti-Glucose Transporter GLUT1 Antibody (A15463) at a dilution of 1:100 (40x lens). Perform microwave antigen retrieval with 10 mM Tris/EDTA buffer pH 9.0 before commencing with IHC staining protocol.