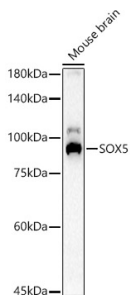


## Anti-SOX5 Antibody (A15465)

### Specifications:

Name:	Anti-SOX5 Antibody
Description:	Rabbit polyclonal antibody to SOX5.
Applications:	WB, IHC, ICC/IF
Recommended Dilutions:	WB: 1:1,000-1:5,000, IHC: 1:50-1:200, ICC/IF: 1:50-1:100
Reactivity:	Human, Mouse, Rat
Immunogen:	A synthetic peptide corresponding to a sequence within amino acids 1-100 of human SOX5 (NP_008871.3).
Sequence:	MLTDPDLPQEFERMSSKRPASPYGEADGEVAMVTSRQKVEEEEESDGLPAFHLPLHVSF PNKPHSEEFQPVSLTQETCGHRTPTSQHNTMEVDGNKVMSS
Host:	Rabbit
Clonality:	Polyclonal
Isotype:	IgG
Conjugate:	Unconjugated
Purification:	Affinity purification.
Molecular Weight:	84 kDa
Product Form:	Liquid
Formulation:	Supplied in Phosphate Buffered Saline, pH 7.3, with 50% Glycerol and 0.05% Proclin 300.
Storage:	Shipped at 4°C. Upon delivery aliquot and store at -20°C. Avoid freeze / thaw cycles.
Disclaimer:	This product is for research use only. It is not intended for diagnostic or therapeutic use.

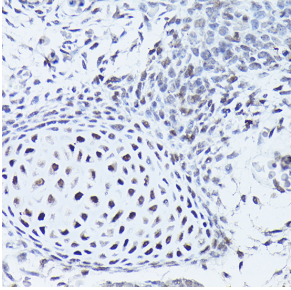
### Images:



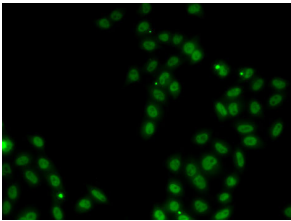
Western blot analysis of extracts of Mouse brain, using Anti-SOX5 Antibody (A15465) at 1:2,000 dilution. The secondary antibody was Goat Anti-Rabbit IgG H&L Antibody (HRP) at 1:10,000 dilution. Lysates/proteins were present at 25µg per lane. The blocking buffer used was 3% non-fat dry milk in TBST. Detection was with a ECL Basic Kit. Exposure time: 180s.

## Anti-SOX5 Antibody (A15465)

Images continued:



Immunohistochemistry analysis of paraffin-embedded mouse embryos using Anti-SOX5 Antibody (A15465) at a dilution of 1:50 (40x lens). Perform high pressure antigen retrieval with 10 mM citrate buffer pH 6.0 before commencing with IHC staining protocol.



Immunofluorescence analysis of MCF7 cells using Anti-SOX5 Antibody (A15465).