

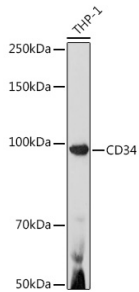
Anti-CD34 Antibody (A15690)

Specifications:

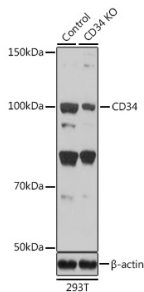
Name:	Anti-CD34 Antibody
Description:	Rabbit polyclonal antibody to CD34.
Applications:	WB, ICC/IF
Recommended Dilutions:	WB: 1:500-1:1,000, ICC/IF: 1:50-1:200
Reactivity:	Human, Mouse, Rat
Immunogen:	Recombinant fusion protein containing a sequence corresponding to amino acids 160-320 of human CD34 (NP_001020280).
Sequence:	PYTSSSPILSDIKAEIKCSGIREVKLTQGICLEQNKTSSCAEFKKDRGEGGLARVLCGE EQADADAGAQVCSLLLAQSEVRPQCLLLVLANRTEISSKLQLMKKHQSDLKKGILDF TEQDVASHQSYSQKTLIALVTSGALLAVLGITGYFLMNRRSWSPT
Host:	Rabbit
Clonality:	Polyclonal
Isotype:	IgG
Conjugate:	Unconjugated
Purification:	Affinity purification.
Molecular Weight:	100 kDa
Product Form:	Liquid
Formulation:	Supplied in Phosphate Buffered Saline, pH 7.3, with 50% Glycerol and 0.02% Sodium Azide.
Storage:	Shipped at 4°C. Upon delivery aliquot and store at -20°C. Avoid freeze / thaw cycles.
Disclaimer:	This product is for research use only. It is not intended for diagnostic or therapeutic use.

Anti-CD34 Antibody (A15690)

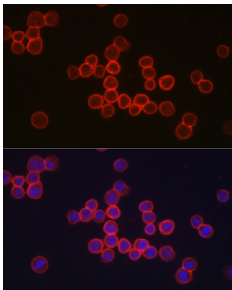
Images:



Western blot analysis of extracts of THP-1 cells, using Anti-CD34 Antibody (A15690) at 1:1,000 dilution. The secondary antibody was Goat Anti-Rabbit IgG H&L Antibody (HRP) at 1:10,000 dilution. Lysates/proteins were present at 25 μ g per lane. The blocking buffer used was 3% non-fat dry milk in TBST. Detection was with a ECL Basic Kit. Exposure time: 180s.



Western blot analysis of extracts from normal (control) and CD34 Rabbit polyclonal antibody knockout (KO) 293T cells, using Anti-CD34 Antibody (A15690) at 1:3,000 dilution. The secondary antibody was Goat Anti-Rabbit IgG H&L Antibody (HRP) at 1:10,000 dilution. Lysates/proteins were present at 25 μ g per lane. The blocking buffer used was 3% non-fat dry milk in TBST. Detection was with a ECL Basic Kit. Exposure time: 90s.



Immunofluorescence analysis of TF-1 cells using Anti-CD34 Antibody (A15690) at a dilution of 1:200 (40x lens). DAPI was used to stain the cell nuclei (blue).