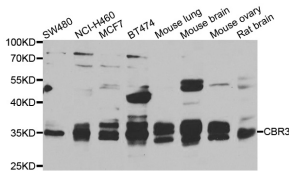


Anti-CBR3 Antibody (A15774)

Specifications:

Name:	Anti-CBR3 Antibody
Description:	Rabbit polyclonal antibody to CBR3.
Applications:	WB, IHC, IF
Recommended Dilutions:	WB: 1:500-1:2000, IHC: 1:50-1:200, IF: 1:50-1:200
Reactivity:	Human, Mouse, Rat
Immunogen:	Recombinant fusion protein containing a sequence corresponding to amino acids 118-277 of human CBR3 (NP_001227.1).
Sequence:	TRNMCNELLPIMKPHGRVNVNISSLQCLRAFENCSEDLQERFHSETLTEGDLVDLMKKF VEDTKNEVHEREGWPNSPYGVSKLGVTVLSRILARRLDEKRRKADRILVNACCPGPVKT DMDGKDSIRTVEEGAETPVYLALLPPDATEPQGQLVHDKVVQNW
Host:	Rabbit
Clonality:	Polyclonal
Isotype:	IgG
Conjugate:	Unconjugated
Purification:	Affinity purification.
Molecular Weight:	31kDa
Formulation:	Supplied in Phosphate Buffered Saline, pH 7.30, with 0.02% Sodium Azide and 50% Glycerol.
Storage:	Shipped at 4°C. Upon delivery aliquot and store at -20°C. Avoid freeze / thaw cycles.
Disclaimer:	This product is for research use only. It is not intended for diagnostic or therapeutic use.

Images:



Western blot analysis of extracts of various cell lines, using Anti-CBR3 Antibody (A7545) at 1:1,000 dilution.

Secondary antibody: Goat Anti-Rabbit IgG (H+L) (HRP) (AS014) at 1:10,000 dilution.

Lysates / proteins: 25µg per lane.

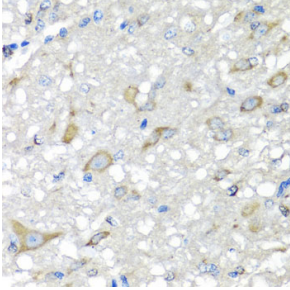
Blocking buffer: 3% non-fat dry milk in TBST.

Detection: ECL Basic Kit (RM00020).

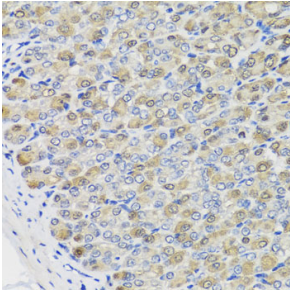
Exposure time: 30s.

Anti-CBR3 Antibody (A15774)

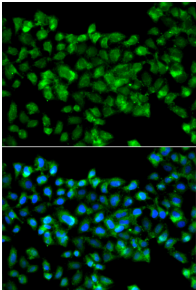
Images continued:



Immunohistochemistry of paraffin-embedded rat brain using Anti-CBR3 Antibody (A7545) at dilution of 1:100 (40x lens).



Immunohistochemistry of paraffin-embedded mouse stomach using Anti-CBR3 Antibody (A7545) at dilution of 1:100 (40x lens).



Immunofluorescence analysis of A549 cells using Anti-CBR3 Antibody (A7545). Blue: DAPI for nuclear staining.