

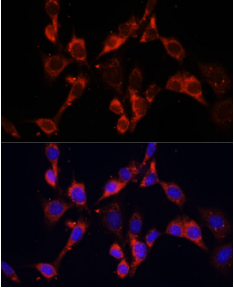
Anti-Dishevelled 2 Antibody (A15778)

Specifications:

Name:	Anti-Dishevelled 2 Antibody
Description:	Rabbit polyclonal antibody to Dishevelled 2.
Applications:	ICC/IF
Recommended Dilutions:	ICC/IF: 1:50-1:200
Reactivity:	Mouse
Immunogen:	Recombinant fusion protein containing a sequence corresponding to amino acids 1-340 of human DVL2 (NP_004413.1).
Sequence:	MAGSSTGGGGVGETKVIYHLDEEETPYLVKIPVPAERITLGDFKSVLQRPAGAKYFFK SMDQDFGVVKEEISDDNARLPCFNRRVSVLWSSDNPQPEMAPPVHEPRAELAPPAPP LPPLPPERTSGIGDSRPPSFHPNVSSSHENLEPETETESVSLRRERPRRRDSSEHGA GGHRTGGPSRLERHLAGYESSSTLMTSELESTSLGDSDEEDTMSRFSSSTEQSSASRL LKRHRRRRKQRPPRLERTSSFSSVTDSTMSLNIITVTLNMEKYNFLGISIVGQSNERG DGGIYIGSIMKGGAVAADGRIEPCDMLLQVNDMMNFENMSNDDAVRVLRLDI
Host:	Rabbit
Clonality:	Polyclonal
Isotype:	IgG
Conjugate:	Unconjugated
Purification:	Affinity purification.
Product Form:	Liquid
Formulation:	Supplied in Phosphate Buffered Saline, pH 7.3, with 50% Glycerol and 0.02% Sodium Azide.
Storage:	Shipped at 4°C. Upon delivery aliquot and store at -20°C. Avoid freeze / thaw cycles.
Disclaimer:	This product is for research use only. It is not intended for diagnostic or therapeutic use.

Anti-Dishevelled 2 Antibody (A15778)

Images:



Immunofluorescence analysis of NIH/3T3 cells using Anti-Dishevelled 2 Antibody (A15778) at a dilution of 1:100. DAPI was used to stain the cell nuclei (blue).