

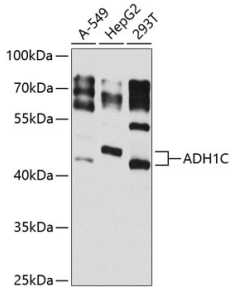
Anti-ADH1C Antibody (A16063)

Specifications:

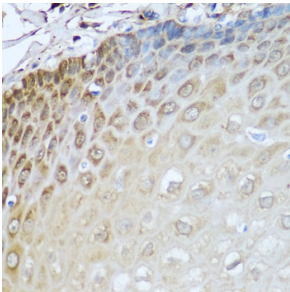
| | |
|------------------------|---|
| Name: | Anti-ADH1C Antibody |
| Description: | Rabbit polyclonal antibody to ADH1C. |
| Applications: | WB, IHC |
| Recommended Dilutions: | WB: 1:500-1:2,000, IHC: 1:50-1:200 |
| Reactivity: | Human, Mouse, Rat |
| Immunogen: | Recombinant fusion protein containing a sequence corresponding to amino acids 1-375 of human ADH1C (NP_000660.1). |
| Sequence: | MSTAGKVIKCKAAVLWELKKPFSIEEVEVAPPKAHEVRIKMVAAGICRSDEHVVSGNL VTPLPVILGHEAAGIVESVGEVTTVKPGDKVIPLFTPQCGKCRICKNPESNYCLKND LGNPRGTLQDGTRRFTCSGKPIHHFVGVSTFSQYTVVDENAVAKIDAASPLEKVCLIG CGFSTGYGSAVKVAKVTPGSTCAVFGLGGVGLSVVMGCKAAGAARIIVDINKDKFAK AKELGATECINPQDYKKPIQEVVKEMTDGGVDFSFEVIGRLDTMMASLLCCHEACGTS VIVGVPPDSQNLINPMLLLTGRTWKGAIFGGFKSSESVPKLVADFMKKFSLDALIT NILPFEKINEGFDLLRSGKSIRTVLTF |
| Host: | Rabbit |
| Clonality: | Polyclonal |
| Isotype: | IgG |
| Conjugate: | Unconjugated |
| Purification: | Affinity purification. |
| Molecular Weight: | 45 kDa |
| Product Form: | Liquid |
| Formulation: | Supplied in Phosphate Buffered Saline, pH 7.3, with 50% Glycerol and 0.02% Sodium Azide. |
| Storage: | Shipped at 4°C. Upon delivery aliquot and store at -20°C. Avoid freeze / thaw cycles. |
| Disclaimer: | This product is for research use only. It is not intended for diagnostic or therapeutic use. |

Anti-ADH1C Antibody (A16063)

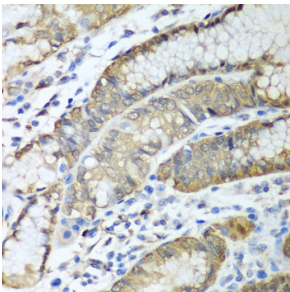
Images:



Western blot analysis of extracts of various cell lines, using Anti-ADH1C Antibody (A16063) at 1:1,000 dilution. The secondary antibody was Goat Anti-Rabbit IgG H&L Antibody (HRP) at 1:10,000 dilution. Lysates/proteins were present at 25 μ g per lane. The blocking buffer used was 3% non-fat dry milk in TBST. Detection was with a ECL Enhanced Kit (RM00021). Exposure time: 10s.



Immunohistochemistry analysis of paraffin-embedded human esophagus using Anti-ADH1C Antibody (A16063) at a dilution of 1:100 (40x lens).



Immunohistochemistry analysis of paraffin-embedded human stomach using Anti-ADH1C Antibody (A16063) at a dilution of 1:100 (40x lens).