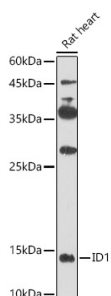


## Anti-Id1 Antibody (A16192)

### Specifications:

|                        |   |
|------------------------|---|
| Name:                  | Anti-Id1 Antibody   |
| Description:           | Rabbit polyclonal antibody to Id1.  |
| Applications:          | WB  |
| Recommended Dilutions: | WB: 1:100-1:500   |
| Reactivity:            | Human, Mouse, Rat   |
| Immunogen:             | Recombinant fusion protein containing a sequence corresponding to amino acids 123-155 of human ID1 (NP_002156.2). |
| Sequence:              | LPVRAPLSTLNGEISALTAEAACVPADDRILCR   |
| Host:                  | Rabbit  |
| Clonality:             | Polyclonal  |
| Isotype:               | IgG   |
| Conjugate:             | Unconjugated  |
| Purification:          | Affinity purification.  |
| Molecular Weight:      | 45 kDa / 16 kDa   |
| Product Form:          | Liquid  |
| Formulation:           | Supplied in Phosphate Buffered Saline, pH 7.3, with 50% Glycerol and 0.05% Proclin 300.                           |
| Storage:               | Shipped at 4°C. Upon delivery aliquot and store at -20°C. Avoid freeze / thaw cycles.                             |
| Disclaimer:            | This product is for research use only. It is not intended for diagnostic or therapeutic use.                      |

### Images:



Western blot analysis of extracts of Rat heart, using Anti-Id1 Antibody (A16192) at 1:500 dilution. The secondary antibody was Goat Anti-Rabbit IgG H&L Antibody (HRP) at 1:1,000 dilution. Lysates/proteins were present at 25µg per lane. The blocking buffer used was 3% non-fat dry milk in TBST. Detection was with a ECL Enhanced Kit. Exposure time: 60s.