

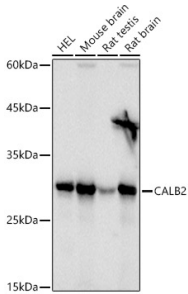
Anti-Calretinin Antibody (A16338)

Specifications:

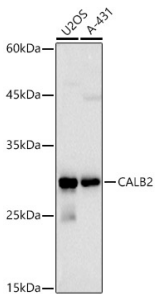
Name:	Anti-Calretinin Antibody
Description:	Rabbit polyclonal antibody to Calretinin.
Applications:	WB, IHC, ICC/IF
Recommended Dilutions:	WB: 1:500-1:1,000, IHC: 1:50-1:200, ICC/IF: 1:50-1:200
Reactivity:	Human, Mouse, Rat
Immunogen:	Recombinant fusion protein containing a sequence corresponding to amino acids 1-271 of human Calretinin (NP_001731.2).
Sequence:	MAGPQQQPPYLHLAELTASQFLEIWKHFDADGNGYIEGKELENFFQELEKARKGSGMM SKSDNFGEKMKEFMQKYDKNSDGKIEMAELAQILPTEENFLLCFRQHVGSSAEFMEAW RKYDTRSGYIEANELKGFLSDLLKKANRPYDEPKLQEYQTILRMFDLNGDGKLGSL EMSRLPVQENFLLKFQGMKLTSEEFNAIFTFYDKDRSGYIDEHELDALLKDLYEKNK KEMNIQQLTNYRKSVMSLAEAGKLYRKDLEIVLCSEPPM
Host:	Rabbit
Clonality:	Polyclonal
Isotype:	IgG
Conjugate:	Unconjugated
Purification:	Affinity purification.
Molecular Weight:	29 kDa
Product Form:	Liquid
Formulation:	Supplied in Phosphate Buffered Saline, pH 7.3, with 50% Glycerol and 0.02% Sodium Azide.
Storage:	Shipped at 4°C. Upon delivery aliquot and store at -20°C. Avoid freeze / thaw cycles.
Disclaimer:	This product is for research use only. It is not intended for diagnostic or therapeutic use.

Anti-Calretinin Antibody (A16338)

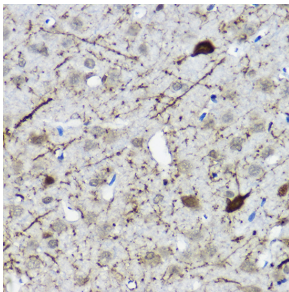
Images:



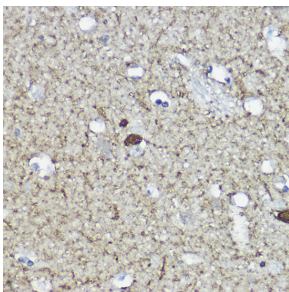
Western blot analysis of extracts of various cell lines, using Anti-Calretinin Antibody (A16338) at 1:1,000 dilution. The secondary antibody was Goat Anti-Rabbit IgG H&L Antibody (HRP) at 1:10,000 dilution. Lysates/proteins were present at 25µg per lane. The blocking buffer used was 3% non-fat dry milk in TBST. Detection was with a ECL Basic Kit. Exposure time: 1s.



Western blot analysis of extracts of various cell lines, using Anti-Calretinin Antibody (A16338) at 1:1,000 dilution. The secondary antibody was Goat Anti-Rabbit IgG H&L Antibody (HRP) at 1:10,000 dilution. Lysates/proteins were present at 25µg per lane. The blocking buffer used was 3% non-fat dry milk in TBST. Detection was with a ECL Basic Kit. Exposure time: 30s.



Immunohistochemistry analysis of paraffin-embedded rat brain using Anti-Calretinin Antibody (A16338) at a dilution of 1:100 (40x lens). Perform high pressure antigen retrieval with 10 mM citrate buffer pH 6.0 before commencing with IHC staining protocol.



Immunohistochemistry analysis of paraffin-embedded human brain tissue using Anti-Calretinin Antibody (A16338) at a dilution of 1:100 (40x lens). Perform high pressure antigen retrieval with 10 mM citrate buffer pH 6.0 before commencing with IHC staining protocol.