

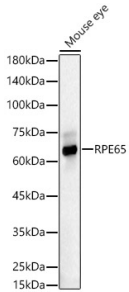
## Anti-RPE65 Antibody (A16350)

### Specifications:

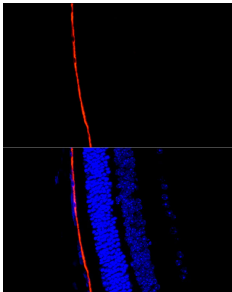
Name:	Anti-RPE65 Antibody
Description:	Rabbit polyclonal antibody to RPE65.
Applications:	WB, ICC/IF
Recommended Dilutions:	WB: 1:1,000-1:5,000, ICC/IF: 1:50-1:200
Reactivity:	Human, Mouse, Rat
Immunogen:	Recombinant fusion protein containing a sequence corresponding to amino acids 274-533 of human RPE65 (NP_000320.1).
Sequence:	NYMDCFESNETMGVWLHIADKKRKKYLNNKYRTSPFNLFHHINTYEDNGFLIVDLCCW KGFVFNLYLANLRENWEEVKKNARKAPQPEVRRYVLPNIDKADTGKNLVTLPNT TATAILCSDETIWLEPEVLFSGPRQAFEPQINYQKYCGKPYTYAYGLGLNHFVPDRL CKLNVKTKETVWVWQEPDSYPSEPIFVSHPDAL EEDDGVVLSVVVSPGAGQKPAYLLIL NAKDLSEVARAEVEINIPVTFHGLFKKS
Host:	Rabbit
Clonality:	Polyclonal
Isotype:	IgG
Conjugate:	Unconjugated
Purification:	Affinity purification.
Molecular Weight:	65 kDa
Product Form:	Liquid
Formulation:	Supplied in Phosphate Buffered Saline, pH 7.3, with 50% Glycerol and 0.02% Sodium Azide.
Storage:	Shipped at 4°C. Upon delivery aliquot and store at -20°C. Avoid freeze / thaw cycles.
Disclaimer:	This product is for research use only. It is not intended for diagnostic or therapeutic use.

## Anti-RPE65 Antibody (A16350)

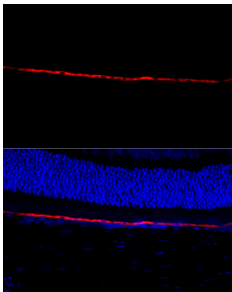
### Images:



Western blot analysis of Mouse eye, using Anti-RPE65 Antibody (A16350) at 1:3,000 dilution. The secondary antibody was Goat Anti-Rabbit IgG H&L Antibody (HRP) at 1:10,000 dilution. Lysates/proteins were present at 25 $\mu$ g per lane. The blocking buffer used was 3% non-fat dry milk in TBST. Detection was with a ECL Basic Kit. Exposure time: 30s.



Immunofluorescence analysis of mouse retina cells using Anti-RPE65 Antibody (A16350) at a dilution of 1:300 (40x lens). DAPI was used to stain the cell nuclei (blue). Perform microwave antigen retrieval with 10 mM citrate buffer pH 6.0 before commencing with IF staining protocol.



Immunofluorescence analysis of rat retina cells using Anti-RPE65 Antibody (A16350) at a dilution of 1:300 (40x lens). DAPI was used to stain the cell nuclei (blue). Perform microwave antigen retrieval with 10 mM citrate buffer pH 6.0 before commencing with IF staining protocol.