

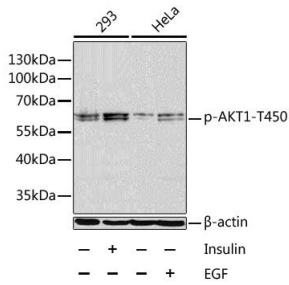
Anti-AKT1 (phospho Thr450) Antibody (A16395)

Specifications:

Name:	Anti-AKT1 (phospho Thr450) Antibody
Description:	Rabbit polyclonal antibody to AKT1 (phospho Thr450).
Applications:	WB
Recommended Dilutions:	WB: 1:500-1:1,000
Reactivity:	Human
Immunogen:	A synthetic phosphorylated peptide around T450 of human Akt1 (NP_005154.2).
Sequence:	TITPP
Host:	Rabbit
Clonality:	Polyclonal
Isotype:	IgG
Conjugate:	Unconjugated
Purification:	Affinity purification.
Molecular Weight:	60 kDa
Product Form:	Liquid
Formulation:	Supplied in Phosphate Buffered Saline, pH 7.3, with 50% Glycerol and 0.02% Sodium Azide.
Storage:	Shipped at 4°C. Upon delivery aliquot and store at -20°C. Avoid freeze / thaw cycles.
Disclaimer:	This product is for research use only. It is not intended for diagnostic or therapeutic use.

Anti-AKT1 (phospho Thr450) Antibody (A16395)

Images:



Western blot analysis of extracts of 293 and HeLa cells, using Anti-AKT1 (phospho Thr450) Antibody (A16395) at 1:1,000 dilution. 293 cells were treated by Insulin (100nM) for 10 minutes after serum-starvation overnight. HeLa cells were treated by EGF (100ng/ml) for 30 minutes after serum-starvation overnight. The secondary antibody was Goat Anti-Rabbit IgG H&L Antibody (HRP) at 1:10,000 dilution. Lysates/proteins were present at 25 μ g per lane. The blocking buffer used was 3% BSA. Detection was with a ECL Basic Kit. Exposure time: 1min.