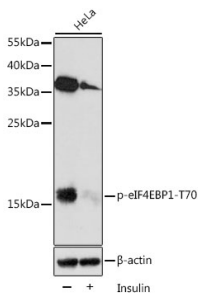


## Anti-eIF4EBP1 (phospho Thr70) Antibody (A16403)

### Specifications:

Name:	Anti-eIF4EBP1 (phospho Thr70) Antibody
Description:	Rabbit polyclonal antibody to eIF4EBP1 (phospho Thr70).
Applications:	WB, IHC
Recommended Dilutions:	WB: 1:500-1:2,000, IHC: 1:50-1:200
Reactivity:	Human, Mouse, Rat
Immunogen:	A synthetic phosphorylated peptide around T70 of human Phospho-eIF4EBP1-T70 (NP_004086.1).
Sequence:	TKTPP
Host:	Rabbit
Clonality:	Polyclonal
Isotype:	IgG
Conjugate:	Unconjugated
Purification:	Affinity purification.
Molecular Weight:	17 kDa
Product Form:	Liquid
Formulation:	Supplied in Phosphate Buffered Saline, pH 7.3, with 50% Glycerol and 0.02% Sodium Azide.
Storage:	Shipped at 4°C. Upon delivery aliquot and store at -20°C. Avoid freeze / thaw cycles.
Disclaimer:	This product is for research use only. It is not intended for diagnostic or therapeutic use.

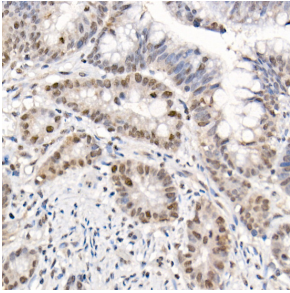
### Images:



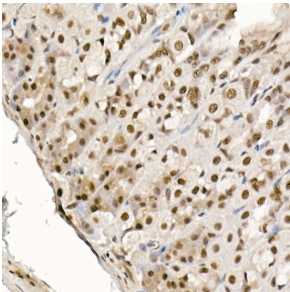
Western blot analysis of extracts of HeLa cells, using Anti-eIF4EBP1 (phospho Thr70) Antibody (A16403) at 1:2,000 dilution. HeLa cells were treated by Insulin (100 nM) at 37°C for 5 minutes after serum-starvation overnight. The secondary antibody was Goat Anti-Rabbit IgG H&L Antibody (HRP) at 1:10,000 dilution. Lysates/proteins were present at 25µg per lane. The blocking buffer used was 3% BSA. Detection was with a ECL Enhanced Kit (RM00021). Exposure time: 3min.

## Anti-eIF4EBP1 (phospho Thr70) Antibody (A16403)

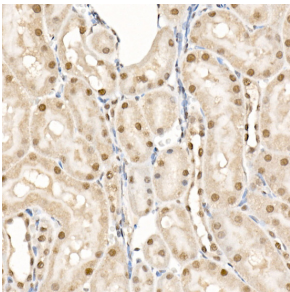
Images continued:



Immunohistochemistry analysis of paraffin-embedded human colon carcinoma tissue using Anti-eIF4EBP1 (phospho Thr70) Antibody (A16403) at a dilution of 1:50 (40x lens). Perform high pressure antigen retrieval with 10 mM citrate buffer pH 6.0 before commencing with IHC staining protocol.



Immunohistochemistry analysis of paraffin-embedded mouse stomach using Anti-eIF4EBP1 (phospho Thr70) Antibody (A16403) at a dilution of 1:50 (40x lens). Perform high pressure antigen retrieval with 10 mM citrate buffer pH 6.0 before commencing with IHC staining protocol.



Immunohistochemistry analysis of paraffin-embedded rat kidney using Anti-eIF4EBP1 (phospho Thr70) Antibody (A16403) at a dilution of 1:50 (40x lens). Perform high pressure antigen retrieval with 10 mM citrate buffer pH 6.0 before commencing with IHC staining protocol.